

Canon Driver Configuration Tool

User's Guide



Please read this guide before operating this product.
After you finish reading this guide, store it in a safe place for future reference.

Canon Driver Configuration Tool User's Guide



How This Manual Is Organized

Chapter 1 Getting Started

Chapter 2 Creating Configured Driver Sets

Chapter 3 Installing Configured Drivers for a Local Printer

Chapter 4 Installing Configured Drivers for a Network Printer

Chapter 5 Appendix

Includes the index.

Contents

| | |
|---|-----------|
| Preface | vi |
| How To Use This Manual | vi |
| Symbols Used in This Manual | vi |
| Buttons Used in This Manual | vi |
| Displays Used in This Manual | vii |
| Abbreviations Used in This Manual | viii |
| Legal Notices | ix |
| Trademarks | ix |
| Copyright | ix |
| Disclaimers | ix |

Chapter 1 Getting Started

| | |
|---|-------------|
| Introduction | 1-2 |
| Scope of the Canon Driver Configuration Tool | 1-2 |
| Supported Drivers | 1-4 |
| System Requirements | 1-5 |
| Installing the Canon Driver Configuration Tool | 1-7 |
| Accessing the Online Help | 1-10 |
| From the Main Window | 1-10 |
| From the Other Screens | 1-11 |
| Uninstalling the Canon Driver Configuration Tool | 1-12 |

Chapter 2 Creating Configured Driver Sets

| | |
|--|-------------|
| About Customized Driver Sets | 2-2 |
| Preparing for Configuration | 2-3 |
| Configuring the Driver Settings | 2-6 |
| Selecting the Model for Configuration | 2-6 |
| Setting Watermarks | 2-7 |
| Setting Default Values | 2-9 |
| Items Whose Default Settings Can Be Configured | 2-9 |
| Configuring Default Values | 2-11 |
| Setting Profiles | 2-14 |
| Setting the Display Mode for Dialog Box Elements | 2-17 |
| Applying the Settings | 2-19 |
| Creating a Configured Driver Set | 2-20 |
| Re-configuring Drivers | 2-22 |

Chapter 3 Installing Configured Drivers for a Local Printer

| | |
|--|------------|
| Preparing for Installation | 3-2 |
| Deleting Drivers That Cannot Coexist | 3-3 |
| If Using Coexisting Drivers of the Same Type for the Same Printer Model | 3-3 |
| If Not Using Coexisting Drivers of the Same Type for the Same Printer Model | 3-4 |
| Installing Configured Drivers | 3-6 |
| Installation Using a Configured Driver Output in Setup Version | 3-6 |
| Installation Using a Configured Driver Output in INF Version | 3-8 |
| Installation Using a Standard Canon Driver Installer | 3-8 |
| Installation Using the Windows Add Printer Wizard | 3-10 |

Chapter 4 Installing Configured Drivers for a Network Printer

| | |
|---|------------|
| Preparing for Installation | 4-2 |
| Deleting Drivers That Cannot Coexist | 4-2 |
| Print Server | 4-2 |
| Client Computer | 4-3 |
| Installing Configured Drivers | 4-5 |
| Installing in a Print Server | 4-5 |
| If Installing Using a Standard Canon Driver Installer | 4-5 |
| If Installing Using the Windows Add Printer Wizard | 4-7 |
| Installing in a Client Computer | 4-8 |

Chapter 5 Appendix

| | |
|------------------------------|------------|
| Troubleshooting | 5-2 |
| Index | 5-7 |

Preface

Thank you for selecting this Canon product. Please read this manual thoroughly before operating this product in order to familiarize yourself with its capabilities, and to make the most of its many functions. After reading this manual, store it in a safe place for future reference.

How To Use This Manual

Symbols Used in This Manual

The following symbols are used in this manual to explain procedures, restrictions, handling precautions, and instructions that should be observed for safety.



IMPORTANT Indicates operational requirements and restrictions. Be sure to read these items carefully in order to operate the product correctly, and to avoid damage to the product.



NOTE Indicates a clarification of an operation, or contains additional explanations for a procedure. Reading these notes is highly recommended.

Buttons Used in This Manual

The following symbols and button names are a few examples of how buttons to be pressed are expressed in this manual:

- Buttons on Computer Operation Screens: [Button Name]

Examples:

[OK]

[Remove]

- Icons on Computer Operation Screens: Key Icon (Key Name)

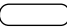
Examples:



(Move Up)

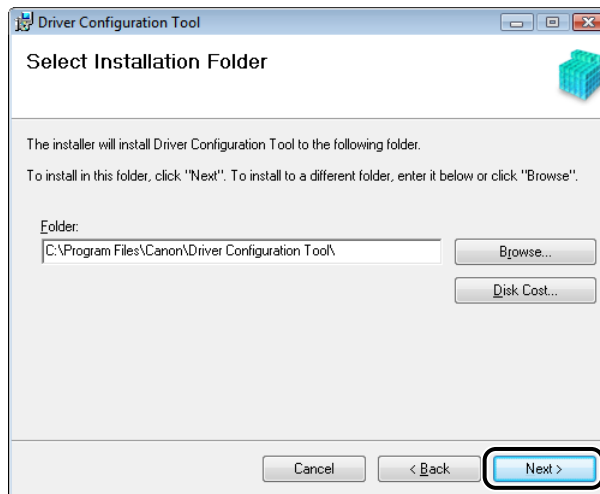
Displays Used in This Manual

Screen shots of computer operation screens used in this manual may differ from the ones you actually see, depending on the operating system and the model or options that come with your machine.

The buttons which you should press are marked with a , as shown below.

When multiple buttons can be pressed, they are highlighted and mentioned in the order in which they should be pressed.

8 Specify the folder where you want to install the utility → click [Next].



Click these buttons for operation.

Abbreviations Used in This Manual

In this manual, product names and model names are abbreviated as follows:

| | |
|--|------------------------|
| Microsoft Windows Server 2003 operating system: | Windows Server 2003 |
| Microsoft Windows Server 2003 R2 operating system: | Windows Server 2003 R2 |
| Microsoft Windows Vista operating system: | Windows Vista |
| Microsoft Windows Server 2008 operating system: | Windows Server 2008 |
| Microsoft Windows Server 2008 R2 operating system: | Windows Server 2008 R2 |
| Microsoft Windows 7 operating system: | Windows 7 |
| Microsoft Windows 8 operating system: | Windows 8 |
| Microsoft Windows 8.1 operating system: | Windows 8.1 |
| Microsoft Windows Server 2012 operating system: | Windows Server 2012 |
| Microsoft Windows Server 2012 R2 operating system: | Windows Server 2012 R2 |
| Microsoft Windows 10 operating system: | Windows 10 |
| Microsoft Windows operating system: | Windows |
| PostScript 3: | PS |
| Novell NetWare: | NetWare |

Legal Notices

Trademarks

Windows and Windows Vista are either registered trademarks or trademarks of Microsoft Corporation in the United States and/or other countries.

Other product and company names herein may be the trademarks of their respective owners.

Copyright

Copyright 2015 by Canon Inc. All rights reserved.

No part of this publication may be reproduced or transmitted in any form or by any means, electronic or mechanical, including photocopying and recording, or by any information storage or retrieval system without the prior written permission of Canon Inc.

Disclaimers

The information in this document is subject to change without notice.

CANON INC. MAKES NO WARRANTY OF ANY KIND WITH REGARD TO THIS MATERIAL, EITHER EXPRESS OR IMPLIED, EXCEPT AS PROVIDED HEREIN, INCLUDING WITHOUT LIMITATION, THEREOF, WARRANTIES AS TO MARKETABILITY, MERCHANTABILITY, FITNESS FOR A PARTICULAR PURPOSE OF USE OR AGAINST INFRINGEMENT OF ANY PATENT. CANON INC. SHALL NOT BE LIABLE FOR ANY DIRECT, INCIDENTAL, OR CONSEQUENTIAL DAMAGES OF ANY NATURE, OR LOSSES OR EXPENSES RESULTING FROM THE USE OF THIS MATERIAL.

Getting Started

1

CHAPTER

This chapter describes the features of the Canon Driver Configuration Tool, the system requirements, installation and uninstallation procedures, and other requirements that need to be met before starting the Canon Driver Configuration Tool.

| | |
|--|------|
| Introduction | 1-2 |
| Scope of the Canon Driver Configuration Tool | 1-2 |
| Supported Drivers | 1-4 |
| System Requirements | 1-5 |
| Installing the Canon Driver Configuration Tool | 1-7 |
| Accessing the Online Help | 1-10 |
| From the Main Window | 1-10 |
| From the Other Screens | 1-11 |
| Uninstalling the Canon Driver Configuration Tool | 1-12 |

Introduction

The Canon Driver Configuration Tool is a utility for changing the factory default settings of Canon printer drivers to create configured driver sets.

For example, if system administrators want to reduce paper consumption, they can create a driver sets in which the default setting for [Page Layout] is [2 on 1] and the default setting for [Print Style] is [2-sided Printing]. Users can then print four pages on one sheet by simply installing and using driver.

This utility enables you to create a customized driver without installing the base driver in the computer. You can also configure drivers using the same screens as normal drivers.



NOTE

- "Driver set" is a set of driver installation files.
- In this manual, "standard drivers" refers to unconfigured Canon standard drivers.

Scope of the Canon Driver Configuration Tool

Items that can be configured using this utility are listed below.

■ Printing Preferences (the [Printing Preferences] dialog box of the printer driver)

You can configure the default values for most items in the following tabs.

- [Basic Settings] tab
- [Page Setup] tab
- [Finishing] tab
- [Paper Source] tab
- [Quality] tab



NOTE

- Some items cannot be configured. (See "Setting Default Values," on p. 2-9.)
- For drivers whose default values have been configured, clicking [Restore Defaults] in the above tabs sets the configured defaults for each item.
- The [Basic Settings] tab contains a combination of basic settings from the other tabs. Configuration of the [Basic Settings] tab and configuration of the other tabs are linked, so that configuration of one tab will automatically apply to the other.

■ Device Settings (the [Device Settings] tab of the printer driver)

You can configure the default values for most items in the [Device Settings] tab.

NOTE

- Some items cannot be configured. (See "Setting Default Values," on p. 2-9.)
- The [Device Settings] tab cannot be configured in the Canon CAPT Printer Driver.

■ Profiles

You can add, delete, or change the order of profiles. You can also configure the settings of profiles.

NOTE

- You can also configure the standard profiles.
- The standard profiles are distinguished by an icon with a red dot.

■ Watermarks

You can add or delete watermarks. You can also configure the settings of watermarks.

NOTE

- You can also configure the standard watermarks.
- The standard watermarks are distinguished by an icon with a red dot.

■ Display Mode for items, selections, and buttons

You can set the display mode for each item, selection, and button to "enabled," "disabled," or "hidden." Disabled items, selections, and buttons are grayed out, and users cannot change their settings. Hidden items, selections, and buttons are not displayed. Buttons and selections displayed in drop-down lists can also be similarly set.

NOTE

The display modes of items, selections, and buttons cannot be configured in the Canon CAPT Printer Driver.

Supported Drivers

The Canon Driver Configuration Tool supports configuration of the following Windows printer drivers.



IMPORTANT

This utility is provided in both 32-bit and 64-bit versions. You cannot configure 64-bit drivers on 32-bit operating systems or 32-bit drivers on 64-bit operating systems.



NOTE

This utility may support driver configuration other than those indicated below. Check the Readme file for the driver to find out if your driver can be configured.

■ 32-bit versions:

- Canon PCL5e/5c Printer Driver Version 6.70 or later
- Canon PCL6 Printer Driver Version 4.70 or later
- Canon PS 3 Printer Driver Version 2.60 or later
- Canon UFR II Printer Driver Version 1.30 or later
- Canon UFR II LT Printer Driver Version 1.30 or later
- Canon CAPT Printer Driver*
- Canon Generic UFR II Printer Driver Version 2.00 or later
- Canon Generic PCL6 Printer Driver Version 1.00 or later

* To confirm whether the Canon CAPT Printer Driver you are using is supported by this utility, refer to the Readme file for the driver.

■ 64-bit versions:

- Canon PCL5e/5c Printer Driver Version 8.00 or later
- Canon PCL6 Printer Driver Version 6.00 or later
- Canon PS 3 Printer Driver Version 4.00 or later
- Canon UFR II Printer Driver Version 2.00 or later
- Canon UFR II LT Printer Driver Version 2.00 or later
- Canon CAPT Printer Driver*
- Canon Generic UFR II Printer Driver Version 2.00 or later
- Canon Generic PCL6 Printer Driver Version 1.00 or later

* To confirm whether the Canon CAPT Printer Driver you are using is supported by this utility, refer to the Readme file for the driver.

System Requirements

The Canon Driver Configuration Tool is guaranteed to work under the following system environments.



IMPORTANT

- The Canon Driver Configuration Tool is guaranteed only for configuration operations on operating systems that support the relevant driver(s). In particular, do not configure Japanese drivers.
- System environments that do not support the driver to be configured do not support the driver after configuration, even if they support this utility.

■ 32-bit versions:

- Operating Systems
 - Windows Vista
 - Windows 7
 - Windows 8
 - Windows 8.1
 - Windows 10
 - Windows Server 2003
 - Windows Server 2003 R2
 - Windows Server 2008
- Computers
 - Any computer that is running either one of the above operating systems.
- Memory
 - Sufficient enough to run either one of the above operating systems.

■ 64-bit versions:

- Operating Systems
 - Windows Vista
 - Windows 7
 - Windows 8
 - Windows 8.1
 - Windows 10
 - Windows Server 2003
 - Windows Server 2003 R2
 - Windows Server 2008
 - Windows Server 2008 R2
 - Windows Server 2012
 - Windows Server 2012 R2
- Computers

Any computer that is running either one of the above operating systems.
- Memory

Sufficient enough to run either one of the above operating systems.

Installing the Canon Driver Configuration Tool

Install the Canon Driver Configuration Tool in your computer according to the following procedure.

 **NOTE**

This procedure uses Windows Vista/7 (32-bit) as an example. Some terms may differ depending on the operating system you are using.

1 Log on to the computer you are using to run the Canon Driver Configuration Tool as an Administrator.

2 Quit all other applications.

3 If a prior version is already installed, uninstall it.

For details about the uninstallation procedure, see "Uninstalling the Canon Driver Configuration Tool," on p. 1-12.

4 Obtain the 32-bit installer of this utility for 32-bit operating systems and the 64-bit installer for 64-bit operating systems.

5 Double-click the [setup] or [setup.exe] file.

The installation program starts.

 **IMPORTANT**

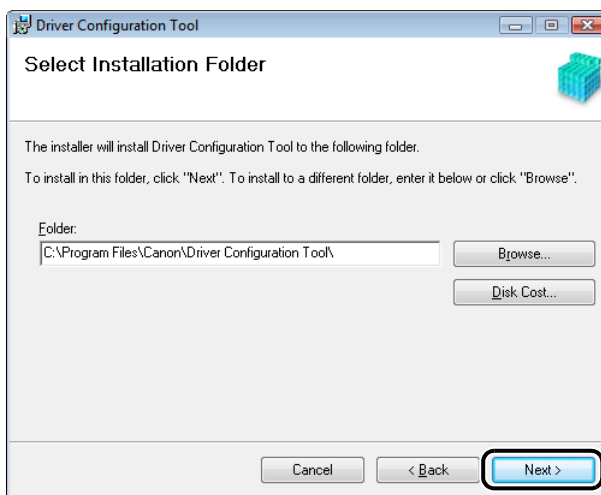
If the [User Account Control] dialog box appears, click [Continue].

6 When the [Driver Configuration Tool Setup Wizard] dialog box is displayed, click [Next].

- 7** Read the software license agreement carefully. If you agree to the terms, select [I Agree] → click [Next].

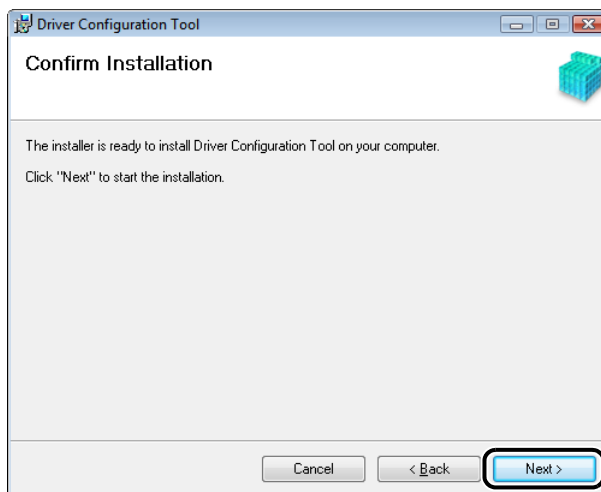


- 8** Specify the folder where you want to install the utility → click [Next].



If you want to install in a location other than the folder displayed, click [Browse] and specify the folder where you want to install the utility.

9 Click [Next] in the [Confirm Installation] screen.



10 When the screen indicating that installation has finished is displayed, click [Close].

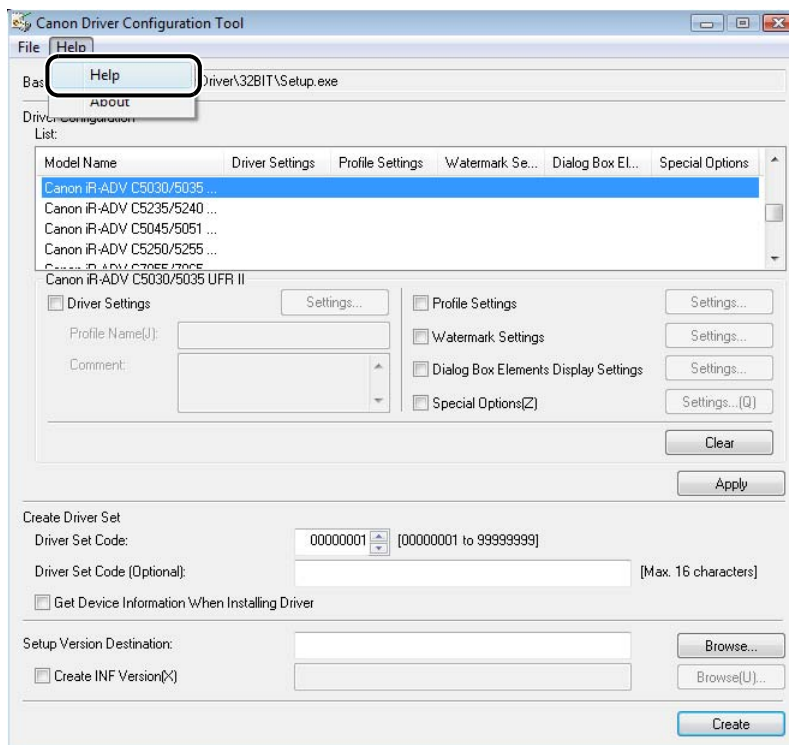
Accessing the Online Help

For detailed information about the various functions of this utility, refer to the Online Help.

You can access the Online Help by following one of the procedures described below.

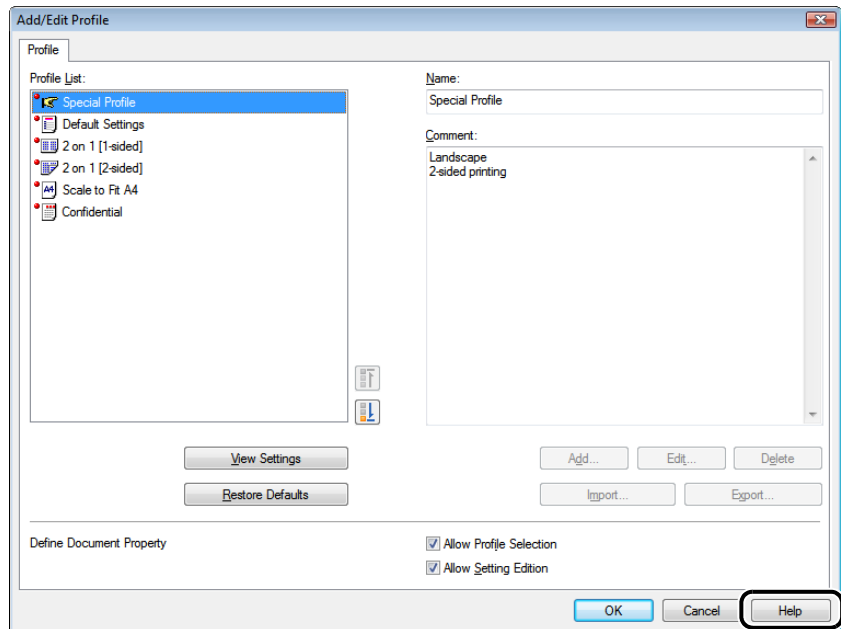
From the Main Window

1 Select [Help] from the [Help] menu.



The Online Help is displayed.

1 Click [Help].



The Online Help is displayed.

Uninstalling the Canon Driver Configuration Tool

If the Canon Driver Configuration Tool is no longer needed, uninstall it by following the procedure below.

 **NOTE**

This procedure uses Windows Vista/7 (32-bit) as an example. Some terms may differ depending on the operating system you are using.

- 1** Log on to Windows as an Administrator.
- 2** From the [Start] menu, select [Control Panel].
- 3** Click [Uninstall a program].
- 4** Select [Driver Configuration Tool] from the program list → click [Uninstall].
- 5** Click [Yes].

The Canon Driver Configuration Tool is uninstalled.

 **IMPORTANT**

If the [User Account Control] dialog box appears, click [Continue].

Creating Configured Driver Sets

2

CHAPTER

This chapter describes how to use the Canon Driver Configuration Tool to create configured driver sets.

| | |
|--|------|
| About Customized Driver Sets | 2-2 |
| Preparing for Configuration. | 2-3 |
| Configuring the Driver Settings. | 2-6 |
| Selecting the Model for Configuration | 2-6 |
| Setting Watermarks | 2-7 |
| Setting Default Values | 2-9 |
| Setting Profiles | 2-14 |
| Setting the Display Mode for Dialog Box Elements | 2-17 |
| Applying the Settings | 2-19 |
| Creating a Configured Driver Set | 2-20 |
| Re-configuring Drivers | 2-22 |

About Customized Driver Sets

The customized driver set formats that can be created with this utility are as follows.

■ If You Use a Setup Version Driver Set as a Base

You can create Setup version configured driver sets, as well as INF version configured driver sets.



IMPORTANT

- If you want to install a configured driver in a 64 bit version of Windows 8 or later, you must create a Setup Version driver.
- Depending on the version of the driver set you are using, Setup version drivers may not be supported.
- If you perform a USB plug and play installation after installing a configured driver, the standard driver will be installed, not the configured driver.
- For cautions when installing an alternate printer driver for 32-bit operating systems in a 64-bit server operating system, see "Troubleshooting," on p. 5-2.

■ If You Use an INF Version Driver Set as a Base

An INF version configured driver is created.

Preparing for Configuration

Before creating a configured driver set, you need to prepare for configuration.

NOTE

- "Driver set" is a set of driver installation files.
- This procedure described below describes procedures using this utility with Windows Vista/7 (32-bit). Some terms may differ depending on the operating system you are using.

1 Log on to the computer you are using to run the Canon Driver Configuration Tool as an Administrator.

2 Decide on the installation method for the driver you will configure using this utility, and obtain the driver set on which it will be based.

● **Installing the configured driver using a standard Canon driver installer:**

- ☐ Obtain a driver installation set that includes an installer ("Setup" version).

The "Setup" version is on the CD-ROM that is included with the printer. You can also download it from the Canon website.

● **Installing the configured driver using the Windows Add Printer Wizard:**

- ☐ Download the INF version from the Canon website.

Only the "Setup" version is on the CD-ROM that is included with the printer. The INF version is not included.

**IMPORTANT**

- If an incorrect combination of installation method used for the configured driver and driver set on which the configured driver is based is used, the configured driver may not be installed correctly.
- If you are using the 32-bit version of this utility, obtain a 32-bit driver set. If you are using the 64-bit version of this utility, obtain a 64-bit driver. You cannot configure 64-bit drivers on 32-bit operating systems or 32-bit drivers on 64-bit operating systems.

3

Copy the driver set obtained in step 2 to a location that can be accessed from the computer running the Canon Driver Configuration Tool.

If the driver set obtained in step 2 is compressed, decompress it.

4

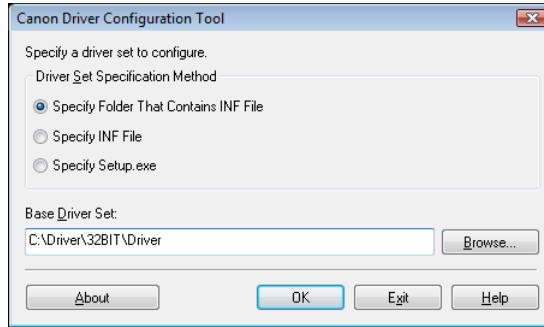
From the [Start] menu, select [All Programs] → [Canon Driver Configuration Tool] → [Driver Configuration Tool].

The Canon Driver Configuration Tool starts.

5 Select [Driver Set Specification Method], and enter the full path to the driver set prepared in step 2 in [Base Driver Set].

The full path to the folder can also be entered in [Base Driver Set] by dragging and dropping the folder into the text box.

You can also enter the full path to the folder by clicking [Browse].



| [Driver Set Specification Method] | |
|--|--|
| [Specify Folder That Contains INF File]: | Select this item if the driver set contains only one INF file. |
| [Specify INF File]: | Select this item if the driver set contains two or more INF files and specify the target INF file. |
| [Specify Setup.exe]: | Select this item if you want to use an installer contained in the driver set. |



NOTE

This dialog box can be opened by selecting [Open] in the [File] menu of the main window.

6 Click [OK].

The main window is displayed.

Configuring the Driver Settings

After you have obtained a driver set, you can configure the driver settings.



IMPORTANT

- If you want to perform configuration for multiple printers, repeat the procedures from "Selecting the Model for Configuration" below, to "Applying the Settings" on p. 2-19, for each printer.
- If you select another driver set as a base for configuration, or quit this utility during an operation, all of the settings you have made will be lost.

Selecting the Model for Configuration

1 Select the model name of the printer for configuration from the list.

You cannot select multiple model names and set them all together at one time.

Canon Driver Configuration Tool

File Help

Base Driver Set: C:\Driver\32BIT\Setup.exe

Driver Configuration

Model Name Driver Settings Profile Settings Watermark Se... Dialog Box El... Special Options

Canon iR-ADV C5030/5035 ...

Canon iR-ADV C5235/5240 ...

Canon iR-ADV C5045/5051 ...

Canon iR-ADV C5250/5255 ...

Canon iR-ADV C5065/5065 ...

Canon iR-ADV C5065/5065 ...

☐ Driver Settings Settings...

Profile Name(J):

Comment:

☐ Profile Settings Settings...

☐ Watermark Settings Settings...

☐ Dialog Box Elements Display Settings Settings...

☐ Special Options(Z) Settings...(Q)

Clear

Apply

Create Driver Set

Driver Set Code: 00000001 [00000001 to 99999999]

Driver Set Code (Optional): [Max. 16 characters]

☐ Get Device Information When Installing Driver

Setup Version Destination: Browse...

☐ Create INF Version(U) Browse(U)...

Create

In the case of configured driver sets, only configured model names are displayed in the list. Also, configured settings are displayed as "On".

Setting Watermarks

Configure watermarks according to the following procedure. If you do not want to configure watermarks, proceed to "Setting Default Values" (see p. 2-9).



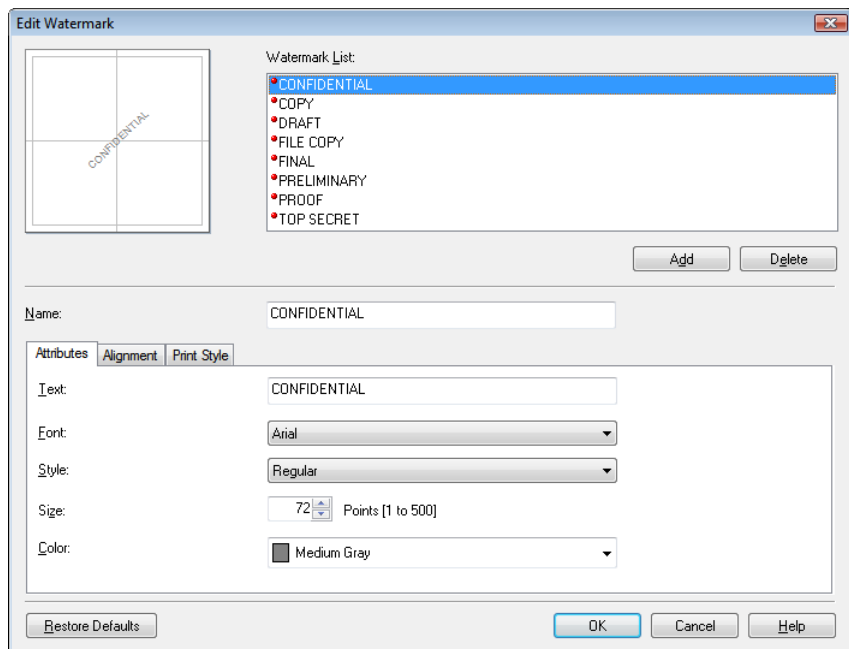
IMPORTANT

- To change the default watermark, select from [Watermark] in the [Page Setup] tab.
- If you have edited or deleted a watermark, reselect a default watermark from the [Page Setup] tab. If you do not, creating a driver set may cause the default watermark name or settings to differ from that intended.

1

In the Canon Driver Configuration Tool main window, select [Watermark Settings] → click [Settings].

The [Edit Watermark] dialog box is displayed.



NOTE

[Restore Defaults] is only displayed in the [Edit Watermark] dialog box when configuration has been performed using this utility.

2 Edit the watermark settings.

● To create a new watermark:

- ☐ Select a watermark as a base from [Watermark List] → click [Add].
The [Name] text box is highlighted, with settings configured to the values of the base watermark.
- ☐ Enter a name for the new watermark.
- ☐ Change the settings if required.

● To delete a watermark:

- ☐ Select the watermark you want to delete from [Watermark List] → click [Delete].



IMPORTANT

- If you click [Restore Defaults], all of the watermarks displayed in [Watermark List], including the watermark you are editing, return to their factory default settings. Also, the order in which the watermarks are displayed returns to its default state.
- At least one watermark must be defined. You cannot delete the last watermark. If you do not require the last remaining watermark and want to create a new one, add the new watermark first, then delete the remaining unneeded watermark.



NOTE

- The setting procedure is the same as that for setting watermarks using the standard drivers.
- You can also configure the standard watermarks.
- Any watermark added or edited here will be displayed as a standard watermark (with a red dot).
- For details on each item, refer to the Online Help for the [Edit Watermark] dialog box. (See "Accessing the Online Help," on p. 1-10.)

3 When the settings are complete, click [OK].

The main window is displayed.

Setting Default Values

If you do not want to configure default values, proceed to "Setting Profiles" (see p. 2-14).

Items Whose Default Settings Can Be Configured

■ Items whose default settings can be configured

You can configure the default values of items in the following tabs.







- Tabs included in the [Printing Preferences] dialog box of the printer driver
 - [Basic Settings] tab
 - [Page Setup] tab
 - [Finishing] tab
 - [Paper Source] tab
 - [Quality] tab
- The [Device Settings] tab of the printer driver

NOTE

- The [Device Settings] tab cannot be configured in the Canon CAPT Printer Driver.
- The [Basic Settings] tab contains a combination of basic settings from the other tabs. Configuration of the [Basic Settings] tab and configuration of the other tabs are linked, so that configuration of one tab will automatically apply to the other.

■ Items whose default values cannot be configured


The default values of the following items cannot be configured. (Whether the following functions are available depends on the driver.)

| | |
|---------------------------|---|
| In the [Page Setup] tab | The preview default selected by  (the preview for the [Page Setup] or [Finishing] tab) or  (the preview for the [Paper Source] tab) |
| | The default setting when [Use Overlay Printing] is selected in the [Overlay] tab of the [Page Options] dialog box (you cannot make [Form File on Device] the default setting, but you can make any of the other settings the default value). |
| | The form file when [Use Overlay Printing] and [Form File on Host] are selected in the [Overlay] tab of the [Page Options] dialog box (although you can set the default name for [File Name], you cannot include the form file itself in the driver set). ^{*1} |
| | The file name log displayed in the drop-down list for [File Name] in the [Overlay] tab of the [Page Options] dialog box. |
| In the [Finishing] tab | The preview default selected by  (the preview for the [Page Setup] or [Finishing] tab) or  (the preview for the [Paper Source] tab) |
| In the [Paper Source] tab | The preview default selected by  (the preview for the [Page Setup] or [Finishing] tab) or  (the preview for the [Paper Source] tab) |

^{*1} If you select [Use Overlay Printing] in the [Page Options] dialog box, and select [Form File on Host], when you install a driver set that sets the default name in [File Name], you must follow through by copying the form file to the location specified in [File Name].

■ Items that cannot be operated while configuring default settings

The following printer driver buttons and drop-down lists cannot be operated in the driver settings windows while you are configuring default settings. (Whether the following functions are available depends on the driver.)

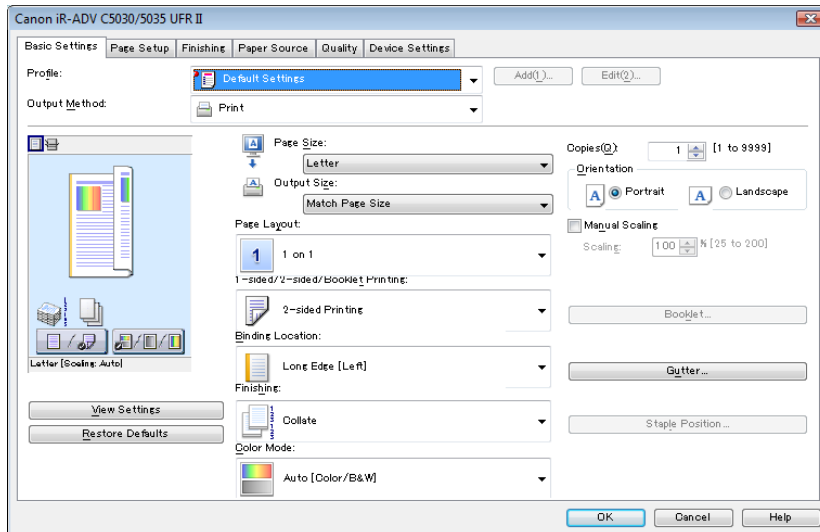
| | |
|--|---|
| Those common to all tabs in the [Printing Preferences] dialog box | [Add] (a Profile) |
| | [Edit] (a Profile) |
| | [Details] when [Secured Print] is selected as the [Output Method] (you can configure the settings only if this button is displayed). |
| | [Lock] when [Edit and Preview] is selected as [Output Method] (this button is not displayed). |
| |  (Display Printer Status Window) |
| In the [Page Setup] tab | [Add] and [Delete] in the [Edit Watermark] dialog box (the [Edit Watermark] dialog box is displayed when you select [Watermark] and click [Edit Watermark]). |
| | [Custom Paper Size] |
| In the [Quality] tab | The [Monitor Profile] drop-down list in the [Matching] tab in the [Color Settings] (or [Grayscale Settings]) dialog box (the [Color Settings] (or [Grayscale Settings]) dialog box is displayed when you select [Manual Color Settings] (or [Manual Grayscale Settings]) and click [Color Settings] (or [Grayscale Settings])). |
| In the [Device Settings] tab | [Settings] when [Department ID Management] is selected. |
| | [Settings] when [Set User Name] is selected. |
| | [Font Settings] |
| | [Get Device Status] |
| | [Get Resource Information] |

Configuring Default Values

Configure default values according to the following procedure.

When you configure default values, the configured settings become the default values and a special profile is created for them.

- 1 In the Canon Driver Configuration Tool main window, select [Driver Settings] → click [Settings].



- 2 Configure the default settings for the [Device Settings] tab.



IMPORTANT

- Configure the default settings in the [Device Settings] tab first. If you configure the default settings in the [Device Settings] tab after updating the default settings for the other tabs, the default settings for the other tabs may be affected by the settings in the [Device Settings] tab, and consequently not correspond to the intended settings.
- If you are using the Canon Generic UFR II Printer Driver, after changing [Device Type], press the [OK] button and close the printer driver screen. Press the [Settings] button to re-open the printer driver screen even if there are no more changes to be made. Check or change the settings, then press [OK] to close the printer driver screen.

**NOTE**

- The setting procedure is the same as that for changing settings using standard drivers.
- For details on each item, refer to the Online Help for the [Device Settings] tab. (See "Accessing the Online Help," on p. 1-10.)

3

Configure the default settings for the [Basic Settings], [Page Setup], [Finishing], [Paper Source], and [Quality] tabs.

**NOTE**

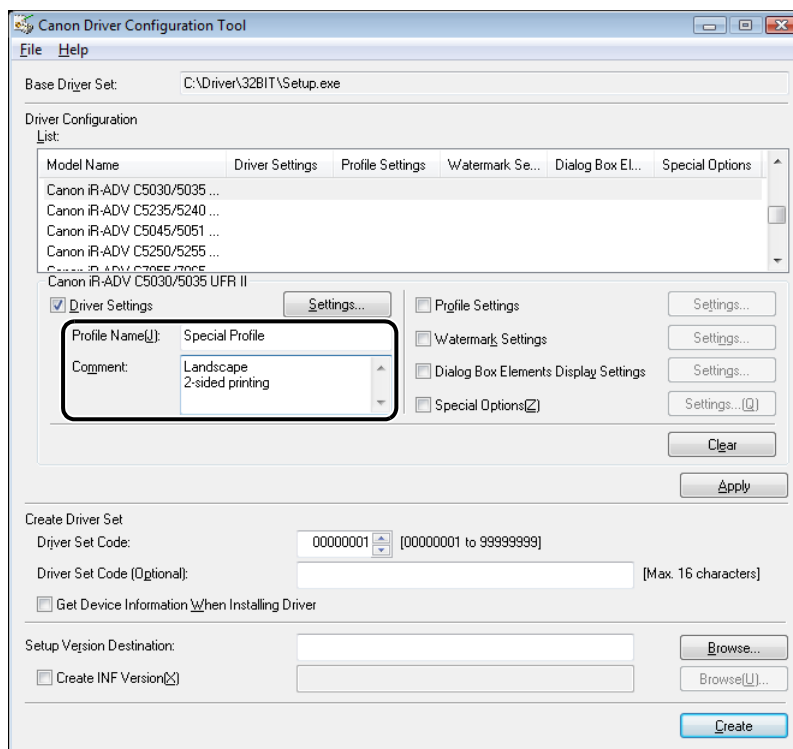
- The setting procedure is the same as that for changing settings using standard drivers.
- For details on each item, refer to the Online Help for each tab. (See "Accessing the Online Help," on p. 1-10.)
- The [Basic Settings] tab contains a combination of basic settings from the other tabs. Configuration of the [Basic Settings] tab and configuration of the other tabs are linked, so that configuration of one tab will automatically apply to the other.

4

When the settings for all of the tabs are complete, click [OK].

The main window is displayed.


5 Enter a name in [Profile Name] and a short description in [Comment].

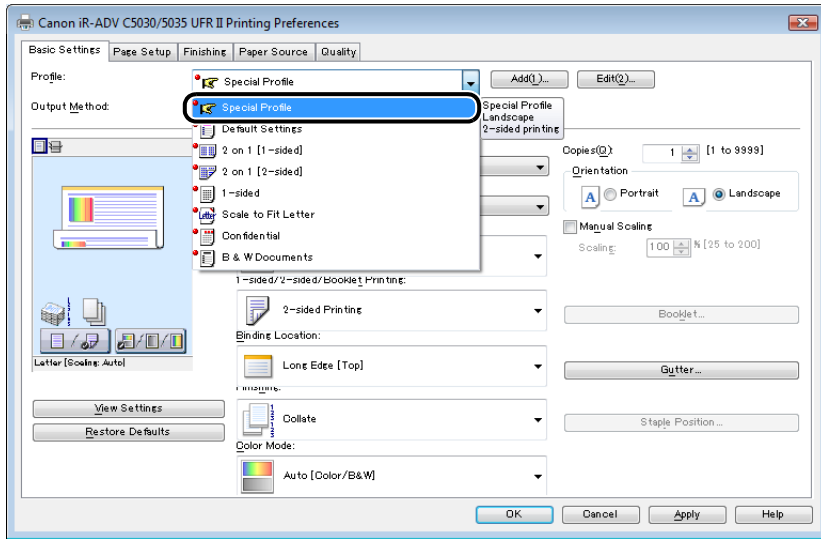


The name entered in [Profile Name] becomes the name of the special profile.



NOTE

- You cannot edit or delete a special profile created here in the [Add/Edit Profile] dialog box. (See "Setting Profiles," on p. 2-14.)
- Special profiles created here are displayed at the top of the [Profile] list, and are displayed with  (Special Profile) in the configured drivers after installation.





- Depending on the driver you are using, you can disable creation of special profiles and change the display order.

Setting Profiles

Configure profiles according to the following procedure. If you do not want to configure profiles, proceed to "Setting the Display Mode for Dialog Box Elements" (see p. 2-17).

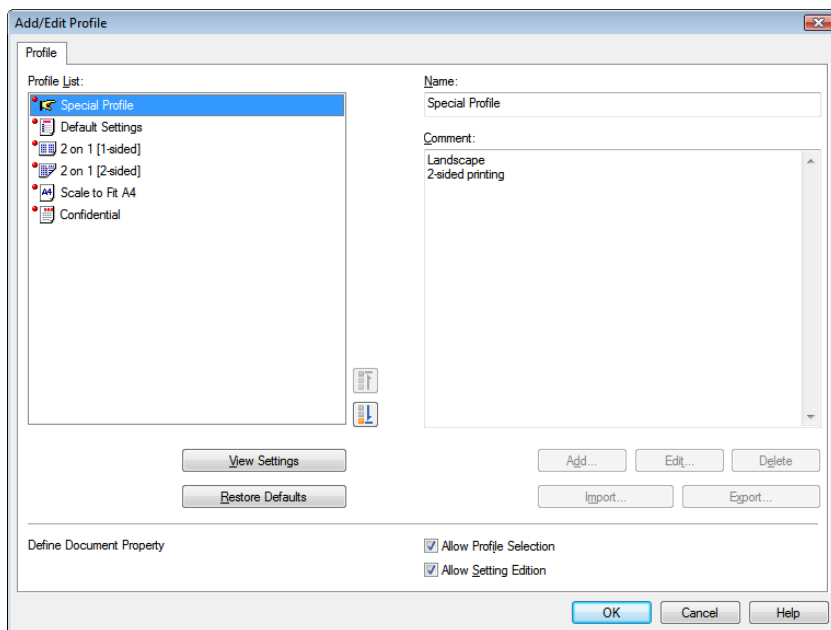


IMPORTANT



- You cannot configure watermarks from the [Add/Edit Profile] dialog box. (See "Setting Watermarks," on p. 2-7.)
- Profiles displayed with  (Special Profile) are special profiles created when the default values of the driver are configured (when [Driver Settings] is selected in the main window). To cancel displaying  (Special Profile), select [Off] for [Add Driver Settings as Profile] in the [Special Options] dialog box.
- Settings modified using the [Add/Edit Profile] dialog box do not affect the [Page Setup], [Finishing], [Paper Source], and [Quality] tabs displayed by this utility. Confirm that the information shown on these tabs is correct by installing the configured driver you have created. (See "Installing Configured Drivers for a Local Printer," on p. 3-1.)

1 In the Canon Driver Configuration Tool main window, select [Profile Settings] → click [Settings].

The [Add/Edit Profile] dialog box is displayed.



NOTE

 (Move up),  (Move down), and [Restore Defaults] are only displayed when configuration has been performed using this utility.

2 Edit the profile settings.



● To create a new profile:

- ☐ Select a profile as a base from [Profile List] → click [Add].

The dialog box to edit profiles is displayed with the settings set to the values of the base profile.

- ☐ Change the settings if required.

● To change the order of profiles:

- ☐ Select the profile whose position you want to change from the [Profile List] → click  (Move up) or  (Move down) to move the profile to the desired position.

● To delete a profile:

- ❑ Select the profile you want to delete from [Profile List] → click [Delete].




IMPORTANT

- If you click [Restore Defaults], all of the profiles displayed in [Profile List], including the profile you are editing, return to their factory default settings. Also, the order in which the profiles are displayed returns to its default state.
- At least one profile must be defined. You cannot delete the last profile. If you do not require the last remaining profile and want to create a new one, add the new profile first, then delete the remaining unneeded profile.



NOTE

- The setting procedure is the same as that for setting profiles using standard drivers.
- You can also configure standard profiles.
- The standard setting values of base driver sets are registered in the [Default Settings] profiles. Changes made according to the procedure described in steps 1-5 of "Configuring Default Values" (see p. 2-11) are applied to  (Special Profile), not the [Default Settings] profile.
- Any profile added or edited here will be displayed as a standard profile (with a red dot).
- For details on each item, refer to the Online Help for the [Add/Edit Profile] dialog box. (See "Accessing the Online Help," on p. 1-10.)

3

When the settings are complete, click [OK].

The main window is displayed.

Setting the Display Mode for Dialog Box Elements

Configure the display mode for items, selections, and buttons according to the following procedure.

You can set the display mode for items, selections, and buttons in the following tabs in the [Printing Preferences] dialog box of the printer driver.

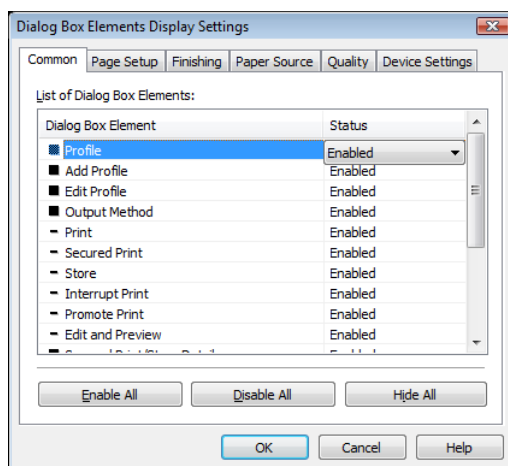
- [Page Setup] tab
- [Finishing] tab
- [Paper Source] tab
- [Quality] tab
- [Device Settings] tab

NOTE

- The display modes of items, selections, and buttons cannot be configured in the Canon CAPT Printer Driver.
- Configuration of the above tabs all automatically be applied to the [Basic Settings] tab.

1 In the Canon Driver Configuration Tool main window, select [Dialog Box Elements Display Settings] → click [Settings].

The [Dialog Box Elements Display Settings] dialog box is displayed.



2 Set the display mode for the items and buttons in each tab.

You can set each of the settings to the following three display modes.

| | |
|-------------------|--|
| [Enabled] | Standard mode. Users can select values other than the default values of the selected items and selections, and can select and use the buttons. To set all items to [Enabled], click [Enable All]. |
| [Disabled] | Users cannot select anything other than the preset default values of selected items and selections, and can neither use nor select buttons. The items that have been set to [Disabled] are grayed out. To set all items to [Disabled], click [Disable All]. |
| [Hidden] | Selected items and buttons are hidden. If you do not want users to be able to see unavailable items or buttons, select this mode. To set all items to [Hidden], click [Hide All]. |



IMPORTANT

- You cannot configure the Online Help, so Help topics that are displayed when you click the configured driver [Help] are the same as those displayed in standard driver Online Help. As a result, the Help topics for items that you have set to [Disabled] or [Hidden] remain available to users.
- The [Dialog Box Elements Display Settings] dialog box displays all of the items, selections, and buttons whose display modes can be modified using this utility, regardless of printer type. Items, selections, and buttons that are not supported by printers that have been or are to be configured are not actually displayed, even if their display mode is set to [Enabled].
- Settings modified using the [Dialog Box Elements Display Settings] dialog box do not affect the [Basic Settings], [Page Setup], [Finishing], [Paper Source], [Quality], and [Device Settings] tabs displayed by this utility. Confirm that the information shown on these tabs is correct by installing the configured driver you have created. (See "Installing Configured Drivers for a Local Printer," on p. 3-1.)



NOTE

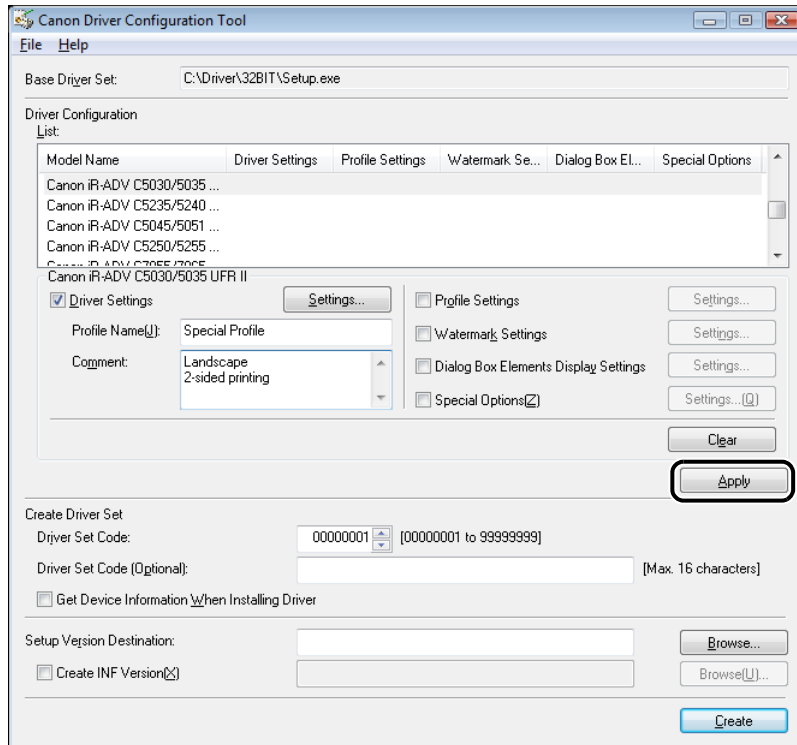
- Use the [Common] tab to set items that are common to all of the tabs.
- Items indicated by ■ are related to the item indicated by ■ that precedes them. If the display mode of the item indicated by ■ is set to [Disabled] or [Hidden], the display modes of the items indicated by ■ that follow it will be the same. For example, if you set [Output Method] in the [Common] tab to [Disabled], the display modes of those items indicated by ■ will be [Disabled] in the configured driver that is actually installed, even if the display modes of [Print], [Secured Print], etc. indicated by ■ that follow it is set to [Enabled].
- If you have installed a configured driver in which you have set items with icons to [Disabled] or [Hidden], some icons may remain on their own in an enabled state, depending on the driver.

3 When the settings are complete, click [OK].

The main window is displayed.

Applying the Settings

1 When you have finished configuring, click [Apply].



If you want to return the configured settings to their factory default settings, click [Clear] → click [Apply].



IMPORTANT

- The settings are applied when you click [Apply]. (If you click [Apply] after clicking [Clear], the settings will return to their factory default settings.)
- Only the settings for the model being configured are returned to their factory default settings by clicking [Clear] and [Apply]. If you are configuring multiple models, the settings for the models that have already been applied are not affected.

Creating a Configured Driver Set

When you have finished configuring a driver, you can create a configured driver set according to the following procedure.

1 Set information for identifying the configured driver.

❑ Set [Driver Set Code].

Be sure to set [Driver Set Code].

❑ Set [Driver Set Code (Optional)].

If you require character-based identification data, enter the characters in [Driver Set Code (Optional)].

The screenshot shows the 'Canon Driver Configuration Tool' window. The 'Base Driver Set' is set to 'C:\Driver\32BIT\Setup.exe'. The 'Driver Configuration List' shows several Canon IR-ADV models. The 'Create Driver Set' section is highlighted with a black border. It contains the following fields and options:

- Driver Set Code:** A numeric field with '00000001' entered and a range of '[00000001 to 99999999]'.
- Driver Set Code (Optional):** A text field with 'CANON' entered and a note '[Max. 16 characters]'.
- ☐ **Get Device Information When Installing Driver**
- Setup Version Destination:** A text field with 'C:\00000001\CANON' entered and a 'Browse...' button.
- ☐ **Create INF Version**
- Create** button



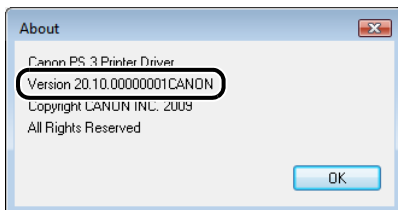
IMPORTANT

[Driver Set Code] and [Driver Set Code (Optional)] are for identifying configured drivers. Do NOT duplicate the codes of other configured driver sets.



NOTE

The [Driver Set Code] and [Driver Set Code (Optional)] set here are displayed as shown below in the [About] dialog box of the configured driver. ([Driver Set Code] is set to "00000001" and [Driver Set Code (Optional)] to "CANON" in the sample screen below.)



2 Select whether to obtain device information when installing.

If you want obtain device information when installing configured drivers, select [Get Device Information when Installing Driver].



IMPORTANT

- If you select this option, the appropriate values are set according to the device information obtained when the configured driver is installed. This device information includes information about the status of options and memory capacity.
- If the device information obtained during installation differs from the default settings configured in the [Device Settings] tab using this utility, the default settings of the driver after installation may differ from the default settings configured with this utility.
- This setting is applied to all printers in the driver set. You cannot specify this setting individually for each device.

3 Specify where the driver set will be created.

Enter the path to the folder where the driver set you created is to be stored [Setup Version Destination]/[INF Version Destination].

You can also enter the path to the folder by clicking [Browse].



IMPORTANT

- You cannot store the driver set in the same folder that holds the driver set used as the base for configuration.
- If you use a Setup version driver set as a base for configuration, you can also create a driver set in INF version. Select [Create INF Version] and click [Browse] to specify the destination for the driver set.

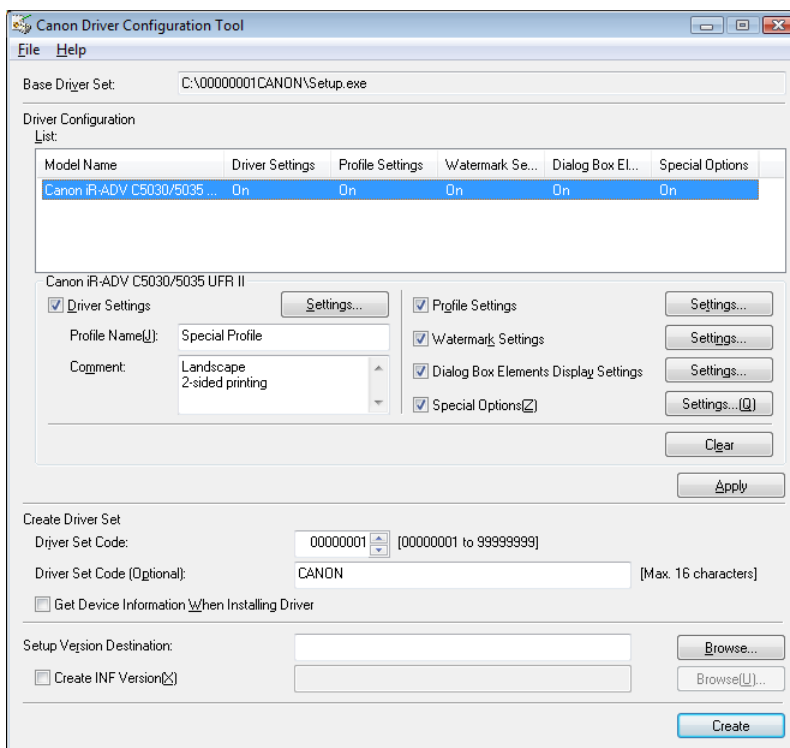
4 Verify the settings → click [Create].

A configured driver set is created in the specified location.

Re-configuring Drivers

You can re-configure drivers that have already been configured.

For information on how to configure drivers, see "Configuring the Driver Settings," on p. 2-6.



- Only the names of models that have been configured are displayed in [Model Name].
- Configured items are displayed in the list as [On].

NOTE

When re-configuring, do so with the same computer environment (file structure etc.) as that used to configure the driver previously.

Installing Configured Drivers for a Local Printer

3

CHAPTER

This chapter describes how to install configured drivers for a local printer.

| | |
|--|------------|
| Preparing for Installation. | 3-2 |
| Deleting Drivers That Cannot Coexist | 3-3 |
| Installing Configured Drivers. | 3-6 |
| Installation Using a Configured Driver Output in Setup Version | 3-6 |
| Installation Using a Configured Driver Output in INF Version | 3-8 |

Preparing for Installation

Firstly, referring to the explanation below, decide whether the configured driver will be used together with other drivers, or on its own.

■ Installing Multiple Drivers

In the same way as standard Canon drivers, different types of configured and standard drivers for the same printer model, and the same types of drivers for different printer models, can coexist on a single computer. Also, if the following conditions are met, the same types of drivers for the same printer model can coexist on the same computer. For example, if you are using the PCL5e/5c driver, you can create two configured driver sets with different configurations, install both, and use the printer with different settings. You can also use one standard driver and one configured driver, or three or more drivers. If you have multiple printers that are the same printer model, you can create configured drivers for each printer, and use them together on one computer. Prepare for installation according to the procedure described in "If Using Coexisting Drivers of the Same Type for the Same Printer Model," on p. 3-3.

- Condition 1: The versions of the drivers being used together are all the same.
For example, only a configured driver that was created based on a PCL5e/5c Version 8.50 driver can be used together with a PCL5e/5c Version 8.50 standard driver. A PCL5e/5c Version 8.50 standard driver and a configured driver that was created based on a PCL5e/5c driver other than Version 8.50 cannot be used together.
- Condition 2: The following environments are not in use.
 - A shared Print Spooler service under MSCS (Microsoft Cluster Service) in Windows Server 2008/Server 2003
 - A client printer automatically created by Windows Terminal Server (including remote desktop connection), Citrix Presentation Server, or MetaFrame Server.
 - A Novell NetWare NDS (Novell Directory Services) printer or NDPS (Novell Distributed Print Services) printer environment
 - An environment in which the printer is connected via SMB

■ Installing a Single Driver

If conditions 1 and 2 of "Installing Multiple Drivers" are not met, the same types of drivers for the same printer model cannot coexist on the same computer (however, different types of drivers, such as a PCL5e/5c driver and a PS driver, can both be installed for the same printer model). Prepare for installation according to the procedure described in "If Not Using Coexisting Drivers of the Same Type for the Same Printer Model," on p. 3-4.

Deleting Drivers That Cannot Coexist

Prepare for installation of configured drivers according to the following procedure.

NOTE

The procedure below uses Windows Vista (32-bit) as an example. The procedure may differ somewhat depending on the OS and environment you are using.

If Using Coexisting Drivers of the Same Type for the Same Printer Model

1 Delete any existing drivers of the same type for the same printer model as the configured driver that you want to install if they are a different version from the one you are installing.

For example, if you are installing a PCL5e/5c Version 8.50 configured driver, delete any existing PCL5e/5c drivers if they are not Version 8.50 for the same printer model. You do not need to delete PCL5e/5c drivers for printer models other than that supported by the configured driver you intend to install. Also, you do not need to delete drivers other than PCL5e/5c drivers, even if they are for the same printer model.

● For drivers that have been installed using the installer:

- ☐ Uninstall each of the drivers using the uninstaller.

For details about the procedure, refer to the respective guides for each of the drivers.

● For drivers that have been installed without using the installer:

- ☐ Select the printer(s) to be uninstalled from the [Printers] folder → delete them.
- ☐ Select [Server Properties] from the menu displayed when you right-click the [Printers] folder.

The [Print Server Properties] dialog box is displayed.

- ☐ Click the [Drivers] tab.
- ☐ Select the printer(s) to be uninstalled → click [Remove].
- ☐ Click [OK].

IMPORTANT

To update a configured driver, you must uninstall the existing configured driver, reconfigure a new driver based on its standard driver set, and install the new driver.

2 If standard drivers or configured drivers that are the same version, for the same printer models, and of the same type as the configured driver you are going to installed are already installed in the computer, check their update dates and times.

If you use multiple drivers together, you must install them beginning with the oldest updated driver onward. If you want to use multiple coexisting drivers, check the updated dates and times: if the update date and time of the already installed driver is more recent than that of the driver you want to install, delete the already installed driver, install the configured driver you want to install, then reinstall the previously existing driver.

● Check the update date and time of the existing driver.

- ☐ Using the Windows Explorer search function, search for files with the ".upd" file extension in the Windows system folder.
- ☐ Check the update date and time of the file(s) that have the name of the printer model you want.

● Check the update date and time of the configured driver you have created.

- ☐ Open the folder where you saved the configured driver set.
- ☐ Check the update date and time of the file(s) that have the name of the printer model you want, with the ".up_" or ".upd" file extension.

If Not Using Coexisting Drivers of the Same Type for the Same Printer Model

1 Delete any existing drivers of the same type for the same printer model as the configured driver that you want to install, regardless of what version they are.

For example, if you are installing a PCL5e/5c configured driver, and a PCL5e/5c driver for the same printer model as the configured driver is already installed in the computer, delete the existing PCL5e/5c driver regardless of the version. You do not need to delete PCL5e/5c drivers for printer models other than that supported by the configured driver you intend to install. Also, you do not need to delete drivers other than PCL5e/5c drivers, even if they are for the same printer model.

● For drivers that have been installed using the installer:

- ☐ Uninstall each of the drivers using the uninstaller.
For details about the procedure, refer to the respective guides for each of the drivers.

● **For drivers that have been installed without using the installer:**

- ☐ Select the printer(s) to be uninstalled from the [Printers] folder → delete them.
- ☐ Select [Server Properties] from the menu displayed when you right-click the [Printers] folder.

The [Print Server Properties] dialog box is displayed.

- ☐ Click the [Drivers] tab.
- ☐ Select the printer(s) to be uninstalled → click [Remove].
- ☐ Click [OK].



IMPORTANT

- To update a configured driver, you must uninstall the existing configured driver, reconfigure a new driver based on its standard driver set, and install the new driver.
- If you install the configured driver by overwriting the existing driver, the new driver may not operate correctly.

Installing Configured Drivers

You can install a configured driver using the following methods, depending on the output format.

Installation Using a Configured Driver Output in Setup Version

This section describes the procedure for installing a configured driver output as a Setup version.



IMPORTANT

When installing a configured driver, you cannot do the following:

- Installation via a connection other than USB.
- Updating existing drivers (only adding a configured driver is possible).

1 Delete any unnecessary drivers in the computer.

Before beginning the installation, prepare an environment in which the configured driver can be installed, referring to "Preparing for Installation," on p. 3-2, and "Deleting Drivers That Cannot Coexist," on p. 3-3.

2 Double-click "Setup.exe".

The installer starts.

3 Install the configured driver according to the instructions on the screen.

The procedure is the same as that for a standard driver. For details, refer to the manual for each driver.

- **If a message saying that a new version of the driver has already been installed is displayed during installation:**

This message is displayed when the configured driver being installed is of the same type and for the same printer model as an existing driver, and the existing driver is a newer version than the configured driver.

Stop the installation, create a configured driver based on a driver of the same version as, or a newer version than, the existing driver, and install the new configured driver.

- **If a message saying that the driver will be updated to a new version is displayed during installation:**

This message is displayed when the configured driver being installed is of the same type and for the same printer model as an existing driver, and the existing driver is an older version than the configured driver.

[Yes]: The installation is continued, and the configured driver replaces the existing driver (they cannot be used together).

[No]: The installation is stopped.

- **If a message saying that the "Designed for Windows" logo cannot be obtained, or that there is no digital signature, is displayed.**

Continue the installation.

(Although this type of message is not displayed with standard Canon drivers because they obtain the above logo or digital signature, configured drivers are not regarded as standard drivers, therefore this type of message may be displayed.)

Installation Using a Configured Driver Output in INF Version

You can install a configured driver output in INF version using the following two methods.

- Installation Using a Standard Canon Driver Installer (p. 3-8)
- Installation using the Windows Add Printer Wizard (p. 3-10)

Installation Using a Standard Canon Driver Installer

Firstly, create a configured driver installation set (Setup version), then install the configured driver using the installer.



NOTE

The procedure below uses Windows Vista/7 (32-bit) as an example. The procedure may differ somewhat depending on the OS and environment you are using.

■ *Creating a Configured Driver Installation Set (Setup Version)*

This section describes how to create a configured driver installation set that (Setup version).

- 1** Copy the standard driver installation set, including an installer (Setup version) that will be the base of the configured driver into the desired location.

2 Delete all the files for standard drivers.

- ❑ Open the folder that contain INF files within the folder you copied in step 1.
Examples (PCL5e/5c Printer Driver Version 20.85):
For the 32-bit version, open "32BIT\Driver\pcl5e_5c".
For the 64-bit version, open "x64\Driver\pcl5e_5c".
Depending on the driver version, the 32-bit version may be in the folder "32BIT\win2k_vista\pcl5e_5c".
- ❑ Delete all files on the same level as the INF files. Also, if there are any folders, delete all of them.
Leave the folder that contained the INF files as is.
Examples (PCL5e/5c Printer Driver Version 20.85):
For the 32-bit version, delete all files or folders in "32BIT\Driver\pcl5e_5c", but leave the "32BIT\Driver\pcl5e_5c" folder.
For the 64-bit version, delete all files or folders in "x64\Driver\pcl5e_5c", but leave the "x64\Driver\pcl5e_5c" folder.
Depending on the driver version, the 32-bit version may be in the folder "32BIT\win2k_vista\pcl5e_5c".

3 Copy all the files for the configured driver into the folder you opened in step 2.

"All the files for the configured driver" means the files within the folder you specified for [Create in] in the main screen of this utility when creating the configured driver.

If you want to include 32-bit and 64-bit configured drivers in one installer, perform the procedure in this step for both of them.



IMPORTANT

Only configured driver sets created using Version 3.10 of this utility can be included in the installer. Do not include configured driver sets created using earlier versions.

4 Delete any unnecessary folders.

If you want to include only the 32-bit driver, delete the "x64" folder. If you want to include only the 64-bit driver, delete the "32BIT" folder.

■ *Installing a Configured Driver Using the Installer*

Install it using the installer created in "Creating a Configured Driver Installation Set (Setup Version)," on p. 3-8.

For details about the procedure, refer to "Installation Using a Configured Driver Output in Setup Version," on p. 3-6.

Installation Using the Windows Add Printer Wizard



NOTE

The procedure below uses Windows Vista/7 (32-bit) as an example. The procedure may differ somewhat depending on the OS and environment you are using. For details concerning installation procedures, refer to your Windows documentation.

1 Delete any unneeded drivers in the computer.

Before beginning the installation, prepare an environment in which the configured driver can be installed, referring to "Preparing for Installation," on p. 3-2, and "Deleting Drivers That Cannot Coexist," on p. 3-3.

2 From the [Start] menu, select [Devices and Printers] (or [Control Panel] - [Printers]).

3 Click [Add a printer] (or [Install a printer]).

The [Add Printer Wizard] is displayed.

4 Click [Next].

5 Follow the instructions on the screen.

6 When the dialog box for selecting the printer manufacturer and model is displayed, click [Have Disk].

7 Specify the location where the driver set created using this utility has been stored → click [OK].

8 Select the printer you want to use from the list → click [Next].

Only printers whose drivers have been configured using this utility will be listed.



IMPORTANT

If the [User Account Control] dialog box appears, click [Continue].

- 9** If the same type of driver for the same printer model is already installed, a dialog box asking whether to replace the existing driver with the new driver is displayed. If you want to use drivers of the same type for the same printer model together, select the option for replacing the driver with a new driver → click [Next].

**IMPORTANT**

If you do not want to use drivers of the same type for the same printer model together, you must delete the existing driver. Quit the installation operation, and start again from Step 1 of "Deleting Drivers That Cannot Coexist," on p. 3-3.



- 10** Follow the instructions on the screen and complete the installation.

**IMPORTANT**

When installing a configured driver, if a message that the driver has not passed the Windows Logo test or the driver set does not contain a signature is displayed, continue the installation.

(Although the above alert is not displayed during installation for printer drivers manufactured by Canon, because they contain the above logo and digital signature, configured drivers differ from standard drivers and are not certified, resulting in the above alert being displayed.)

Installing Configured Drivers for a Network Printer

4

CHAPTER

This chapter describes how to install configured drivers for a network printer.

| | |
|--|-----|
| Preparing for Installation. | 4-2 |
| Deleting Drivers That Cannot Coexist | 4-2 |
| Installing Configured Drivers. | 4-5 |
| Installing in a Print Server. | 4-5 |
| Installing in a Client Computer | 4-8 |

Preparing for Installation

If the printer is to be shared via a print server and the system administrator has installed a configured driver that supports the client computer's operating system, the configured driver can be installed from the print server to the client computer using the Windows alternate driver installation function (Point and Print).



IMPORTANT

For cautions when installing an alternate printer driver for 32-bit operating systems in a 64-bit server operating system, see "Troubleshooting," on p. 5-2.

Deleting Drivers That Cannot Coexist

Print Server

You can use multiple printer drivers of the same printer model and type on a single print server. For example, if you are using a printer with the standard PCL5e/5c driver, you can install a second, configured driver for that printer and split usage between the two. Similarly, even if you are running multiple printers of the same printer model, you can install configured drivers for each printer on the print server, and use each printer with a different configuration.

■ *When Using Multiple Drivers of the Same Type for the Same Printer Model*

1 Verify the conditions under which drivers can coexist.

Referring to "Preparing for Installation," for local printers on p. 3-2, verify the conditions for drivers to coexist.

2 Perform the required operations, referring to "If Using Coexisting Drivers of the Same Type for the Same Printer Model," for local printers on p. 3-3.



IMPORTANT

If you intend to use multiple drivers together, install them in the order in which they were modified, from the oldest to the newest.

If the order deviates from this rule, the drivers may not operate correctly.

■ *When Not Using Multiple Drivers of the Same Type for the Same Printer Model*

- 1 Delete any existing drivers of the same type for the same printer model as the configured driver that you want to install, referring to "If Not Using Coexisting Drivers of the Same Type for the Same Printer Model," on p. 3-4.



NOTE

If you want to use coexisting drivers of the same type for the same printer model, install them for local printer use. For details, see "Installing Configured Drivers for a Local Printer," on p. 3-1.

Client Computer

The same types of drivers for the same printer model can coexist in a client computer.

■ *If Using Coexisting Drivers of the Same Type for the Same Printer Model*

- 1 Check the status of the drivers that can coexist.

Check the status of the drivers that can coexist, referring to "Preparing for Installation," for a local printer, on p. 3-2.

2 Configure the necessary settings, referring to "If Using Coexisting Drivers of the Same Type for the Same Printer Model," for a local printer, on p. 3-3.



IMPORTANT

If you want to use multiple drivers together, you must install them in order, beginning with the oldest version. If you install them in a different order, the drivers may not operate correctly.

■ ***If Not Using Coexisting Drivers of the Same Type for the Same Printer Model***

1 Configure the necessary settings, referring to "If Not Using Coexisting Drivers of the Same Type for the Same Printer Model," for a local printer, on p. 3-4.

Installing Configured Drivers



NOTE

The procedure described below uses Windows Vista/7 (32-bit) as an example. The procedure may differ somewhat depending on the OS and environment you are using.

Installing in a Print Server

You can install a configured driver using one of the following two methods.

- Installation using a standard Canon driver installer (p. 4-5)
Use this method to install a configured driver created from a driver install set that includes an installer (Setup version).
- Installation using the Windows Add Printer Wizard (p. 4-7)
Use this method to install a configured driver created from an INF version.



IMPORTANT

You cannot use a standard Canon driver installer to install a configured driver created from an INF version.

If Installing Using a Standard Canon Driver Installer



IMPORTANT

If you want to install an alternate driver using the installer, check the following:

- Configured driver sets that can be incorporated into installers are Windows 32-bit and 64-bit versions that have been created in version 3.10 or later of this utility.
Consequently, the only alternate drivers that can be installed using the installer are 64-bit drivers when the print server is a 32-bit operating system, or 32-bit drivers when the print server is a 64-bit operating system.

1

Delete any unneeded drivers in the print server.

Before beginning the installation, prepare an environment in which the configured driver can be installed, referring to "Preparing for Installation," on p. 4-2.

2 Create a configured driver installation set (Setup version).

The procedure is the same as that for a local printer. For details about the procedure, see "Creating a Configured Driver Installation Set (Setup Version)," on p. 3-8.

3 Start the installer.

● For 32-bit version:

- ☐ Double-click "Setup.exe" in the "32BIT" folder.

● For 64-bit version:

- ☐ Double-click "Setup.exe" in the "x64" folder.

The installer starts.

4 Select the [Use as Shared Printer] check box in the [Printer Information] screen displayed during installation → enter the name of the shared printer in [Shared Name].

5 When adding a configured driver (alternate driver) supported by the operating system of the client computer, perform the following procedure.

- ☐ Click [Drivers to Add].
- ☐ Select the relevant items from the client computer operating system list → click [OK].



NOTE

Although you can install multiple configured drivers in a print server, you can only use one configured driver for each printer model as an alternate driver.

6 Install the configure driver according to the instructions on the screen.

7 Restart the spooler.

Restart the print server spooler using one of the following methods.

- Restart Windows.
- Restart the spooler from the service. The procedure is as follows.
From the [Start] menu, select [Control Panel] - [Administrative Tools] - [Services].
Then, right-click [Print Spooler] → click [Restart].
- Restart the spooler from the command line. The procedure is as follows.
Enter the following at the command line prompt:
 > net stop spooler
 > net start spooler

If Installing Using the Windows Add Printer Wizard

1 Delete any unneeded drivers in the print server.

Before beginning the installation, prepare an environment in which the configured driver can be installed, referring to "Preparing for Installation," on p. 4-2.

2 Install the configured driver for the print server.

The procedure is the same as that for a local printer. For details about the procedure, see "Installation Using the Windows Add Printer Wizard," on p. 3-10.

3 Right-click the icon of the printer installed in [Printers] of the print server → select [Sharing].

4 Select [Share this printer] in the [Sharing] tab → enter a share name.

5 When adding a configured driver (alternate driver) supported by the operating system of the client computer, perform the following procedure.

- ☐ Click [Additional Drivers].
- ☐ In the [Additional Drivers] dialog box, select the check boxes for the relevant items → click [OK].

- ❑ Specify the path to the folder where the configured driver for the client computer is stored → click [OK].

Driver installation starts.



NOTE

Although you can install multiple configured drivers in a print server, you can only use one configured driver for each printer model as an alternate driver.

6 After installation is complete, close the printer properties dialog box.

7 Restart the spooler.

Restart the print server spooler using one of the following methods.

- Restart Windows.
- Restart the spooler from the service. The procedure is as follows.
From the [Start] menu, select [Control Panel] - [Administrative Tools] - [Services].
Then, right-click [Print Spooler] → click [Restart].
- Restart the spooler from the command line. The procedure is as follows.
Enter the following at the command line prompt:
 - > net stop spooler
 - > net start spooler

Installing in a Client Computer

1 Delete any unneeded drivers in the client computer.

Before installation, delete unneeded drivers according to the procedure in "Deleting Drivers That Cannot Coexist," on p. 4-2.

2 Display the printers on the print server using Explorer or another browser.

3 Double-click the icon of the printer for which you want to install the configured driver.

A message asking whether you want to perform printer settings is displayed.

4 Click [OK].

The wizard may start automatically, depending on the OS. If the wizard starts, follow the instructions on the screen.



NOTE

- You can also specify the network printer using [Add Printer Wizard]. For details, refer to your Windows documentation.
- If the operating system of the print server is 32-bit and the operating system of a client computer is 64-bit, or vice versa, only one driver, which has been registered in the server as an alternate driver, can be used by the client.
- If you are using an alternate driver, make the configuration of the alternate driver the same as the driver installed in the print server.

Appendix

5

CHAPTER

This chapter includes the troubleshooting and index.

| | |
|-----------------------|-----|
| Troubleshooting | 5-2 |
| Index | 5-7 |

Troubleshooting

This section describes how to resolve problems that may occur during the use of this utility.

The following error message is displayed regardless of whether the driver is supported by this utility.

"There is no driver set that supports Canon Driver Configuration Tool in the specified folder. Specify the correct folder."

Cause If the driver set that is to be the base for configuration includes multiple INF files, a specific target INF file has not been selected.

Remedy Depending on the driver type, a driver set may include multiple INF files. For this type of driver, in the dialog box where you specify the driver set to be used as the base for the configured driver, select [Specify INF File] from [Driver Set Specification Method], and enter the full path of the target INF file in the [Base Driver Set] text box.

You cannot install an INF version configured driver in a 64-bit operating system.

Cause In the 64-bit versions of Windows 8/8.1/10 and Windows Server 2012 R2, you cannot install INF versions of configured drivers due to operating system restrictions.

Remedy Create a Setup version of the configured driver and install it. For the procedure to create a Setup version, see "Creating a Configured Driver Set," on p. 2-20, and "Installation Using a Configured Driver Output in Setup Version," on p. 3-6.


You cannot install an alternate printer driver for 32-bit operating systems in a 64-bit operating system.

Cause Because you cannot install INF versions of configured drivers in the 64-bit versions of Windows 8/8.1/10 and Windows Server 2012 R2 due to operating system restrictions, you cannot add a driver for 32-bit operating systems from [Devices and Printers] after you have installed a driver for 64-bit operating systems.

Remedy When using a driver configured with this utility as an alternate printer driver, delete existing drivers and configure and install a driver according to the following procedure.

■ **Configuring a Driver in a 32-bit Operating System**


Firstly, configure a 32-bit driver.

- 1** In a 32-bit operating system with this utility (32-bit version) installed, prepare the install set (Setup version) of the printer driver you want to use.
 - 2** Start this utility.
 - 3** In the screen for specifying the driver set to configure, select [Setup.exe] from [Driver Set Specification Method].
 - 4** Click [Browse] for [Base Driver Set], specify the "Setup.exe" of the install set prepared in step 1, then click [OK].
 - 5** Configure the driver in the main screen. For details, see "Configuring the Driver Settings," on p. 2-6.
 - 6** Create a new folder called "32BIT" in a desired location in the operating system.
-  **IMPORTANT**
- Be sure to enter "32BIT" in single-byte characters for the folder name created here. Because of automatic discrimination when installing a configured driver, it cannot be installed correctly with a different folder name.
- 7** Specify the "32BIT" folder created in step 6 for [Setup Version Destination], and create the configured driver set. For details, see "Creating a Configured Driver Set," on p. 2-20.

■ Customizing a Driver in a 64-bit Operating System

Next, configure a 64-bit version driver.

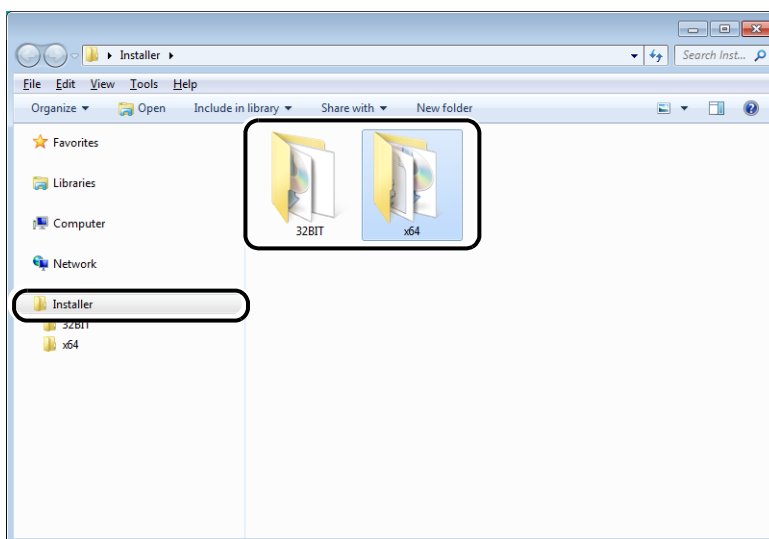
- 1** In a 64-bit operating system with this utility (64-bit version) installed, prepare the install set (Setup version) in the same way as in step 1 of "Configuring a Driver in a 32-bit Operating System."
- 2** Start this utility.
- 3** In the screen for specifying the driver set to configure, select [Setup.exe] from [Driver Set Specification Method].
- 4** Click [Browse] for [Base Driver Set], specify the "Setup.exe" of the install set prepared in step 1, then click [OK].
- 5** Configure the driver in the main screen. For details, see "Configuring the Driver Settings," on p. 2-6.
- 6** Create a new folder called "x64" in a desired location in the operating system.

 **IMPORTANT**
Be sure to enter "x64" in single-byte characters for the folder name created here. Because of automatic discrimination when installing a configured driver, it cannot be installed correctly with a different folder name.
- 7** Specify the "x64" folder created in step 6 for [Setup Version Destination], and create the configured driver set. For details, see "Creating a Configured Driver Set," on p. 2-20.

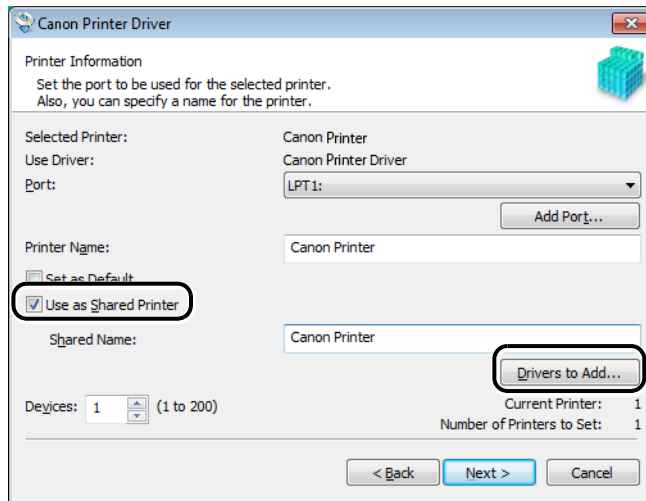
■ **Installing an Alternate Printer Driver in a 64-bit Operating System**

Finally, install the configured driver as an alternate printer driver.

- 1** Create a folder called "Installer" in a desired location in the 64-bit operating system. In that folder, place the "32BIT" folder created in "Configuring a Driver in a 32-bit Operating System" and the "x64" folder created in "Customizing a Driver in a 64-bit Operating System."
- 2** Double-click [x64] – [Setup] from the [Installer] folder created in step 1, and start the installer.



- 3** In the [Printer Information] screen displayed during the installation, select the [Use as Shared Printer] check box, and click [Drivers to Add].



- 4** In the [Drivers to Add] screen, select the driver (32-bit version) you added as an alternate driver, then click [OK].
- 5** Click [Next], and complete the installation according to the instructions on the screen.

A

Accessing Online Help, 1-10
 From main window, 1-10
 From other screens, 1-11
Applying settings, 2-19

C

Change order of profiles, 2-15
Configuring driver settings, 2-6
Create new profile, 2-15
Creating configured driver set, 2-20

D

Default Settings, 1-2, 2-9, 2-11, 2-16, 2-21
Delete profile, 2-16
Deleting drivers that cannot coexist, 3-3, 4-2
Device Settings, 1-3, 2-11
Dialog Box Elements Display Settings, 2-17
Driver set, 1-2, 2-5, 2-20
Driver Set Code, 2-20

F

File Name, 2-9
From main window, 1-10
From other screens, 1-11

G

Get Device Information when Installing Driver,
 2-21

I

Installation using Windows Add Printer Wizard,
 3-10
Installing Canon Driver Configuration Tool, 1-7
Installing configured drivers, 3-6, 4-5
Installing in client computer, 4-8
Installing in print server, 4-5
Introduction, 1-2

O

Obtain device information when installing, 2-21

P

Preparing for configuration, 2-3
Preparing for installation, 3-2, 4-2
Printing Preferences, 1-2, 2-9, 2-17
 Finishing, 1-2, 2-9, 2-17
 Page Setup, 1-2, 2-9, 2-17
 Paper Source, 1-2, 2-9, 2-17
 Quality, 1-2, 2-9, 2-17
Profile Name, 2-13
Profile settings, 2-15

R

Re-configuring Drivers, 2-22
Restore Defaults, 1-2, 2-7, 2-8, 2-15, 2-16

S

Scope of Canon Driver Configuration Tool, 1-2

Selecting model for configuration, 2-6
Setting default values, 2-9
Setting display mode for dialog box elements,
2-17
Setting profiles, 2-14
Setting watermarks, 2-7
Special profile, 2-14, 2-16
Supported drivers, 1-4
System requirements, 1-5

U

Uninstalling Canon Driver Configuration Tool,
1-12

5

W

Watermark, 1-3, 2-7

