



1. Introduction

ArcSoft MediaConverter™ 2.5 is an application that addresses the widespread needs for media-on-the-go! With a litany of file conversion options and a broad range support for media formats, files can be effortlessly converted and transferred to portable devices without any user intervention. Through an easy-to-navigate user interface, converting and transferring media to portable devices is as easy as four steps: Select device type, select conversion parameter, preview, and convert! Furthermore, ArcSoft MediaConverter™ 2.5 is designed to optimize portable media players, with its advanced file-compression algorithm, files can be quickly converted and played back without compromising quality and performance.

2. Supported Functions and File Formats

ArcSoft MediaConverter™ 2.5 provides native support for most popular media formats; it also allows ripping audio tracks directly from video. Furthermore, ArcSoft MediaConverter™ 2.5 supports Mass Storage Card (MSC) as well as the Microsoft Media Transfer Protocol (MTP) for easy media transfers (as long as VID or PID is available. MTP requires Windows Media Player 10).

Supported Import File Formats:

- **Image:** JPEG, TIFF, GIF, PNG, BMP, TGA, FPX, PCX, PCD, and RAW
- **Video:** AVI (Microsoft Video 1 format, Cinepak, Intel Indeo, DivX, uncompressed, etc.), MPEG-1 & MPEG-2 in MPEG, MPG, MPE, Real Video (.RM) or VOB (unprotected) formats, MPEG-4 in AVI format, DAT, ASF, QuickTime MOV, and WMV
Note: QuickTime 6.5, Windows Media Player 9.0, and RealPlayer 8+ are required for QuickTime MOV file conversion, WMV file conversion, and Real Video file conversion respectively.
- **Music:** MP3, WMA, WAV
Note: Windows Media Player 9.0 is required for WMA file conversion.

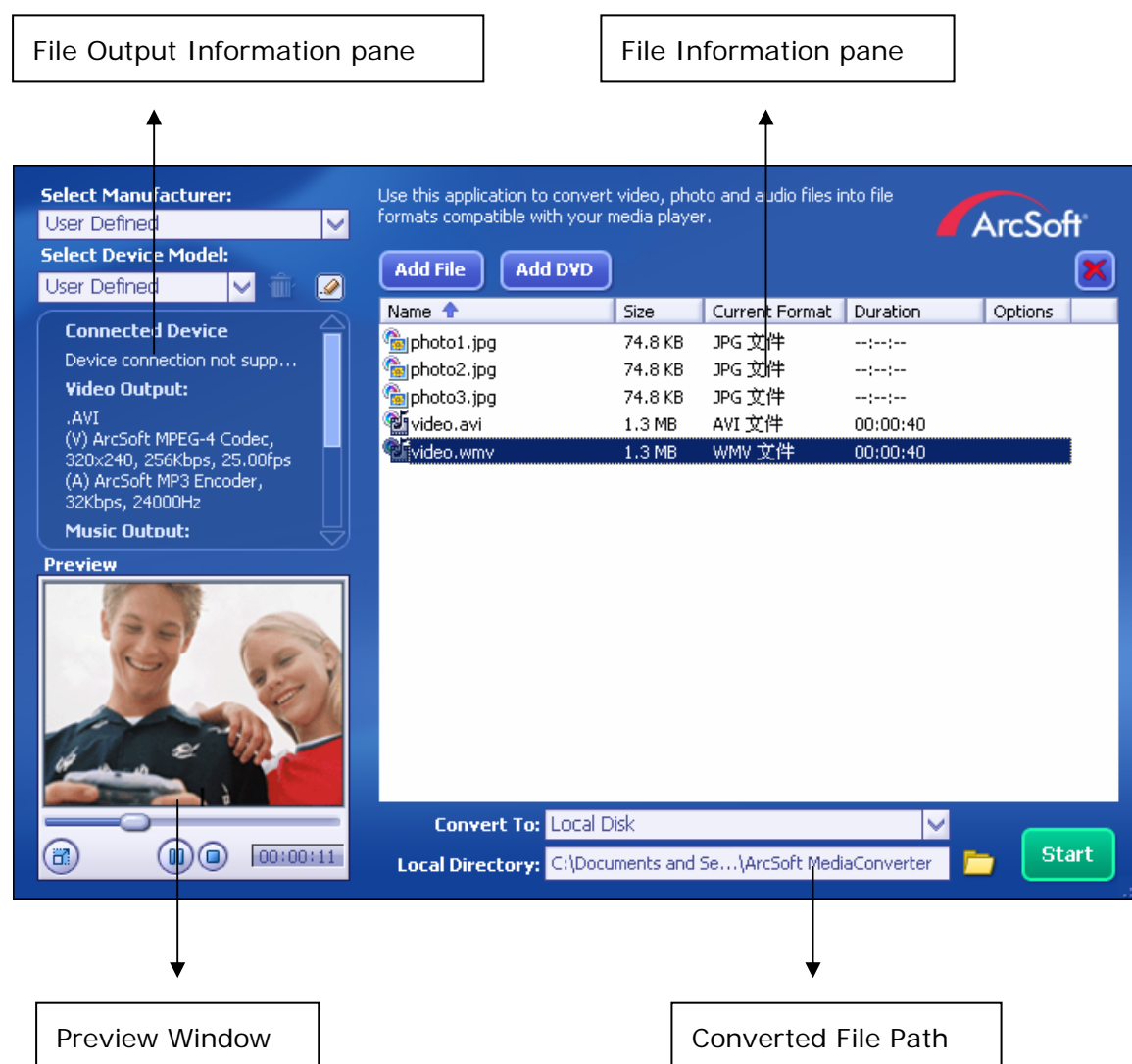
ArcSoft MediaConverter

Supported Export File Formats:

- **Image:** JPEG, BMP
- **Video:** MPEG-4 encoded AVI file, MPEG-4 encoded ASF file, MPEG-4 encoded MP4 file, WMV file, MPEG-1, Rip MP3 (saves the audio stream from a video file as MP3), iPod Video MP4 support, QuickTime Movie, and Sony PSP Video MP4 support
- **Music:** MP3 (Default)
- **YouTube:** Upload converted files to a YouTube account

3. Launching ArcSoft MediaConverter™ 2.5

When you first launch MediaConverter™ 2.5, the program will appear as follows:



- File Output Information pane: Displays detailed file output information.
- File Information pane: Lists the selected file(s) for conversion.

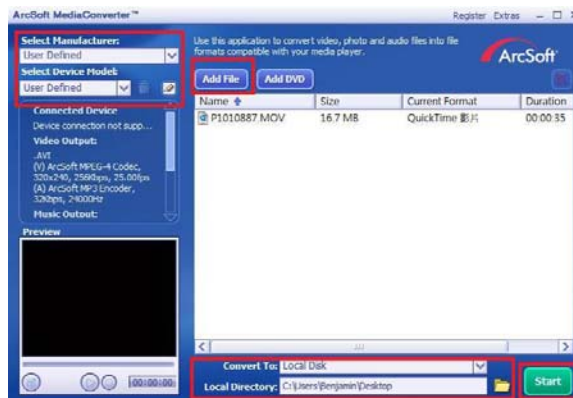
ArcSoft MediaConverter

- Preview Window: Allows you to preview your photo or video before it's converted.
- Converted File Path: Displays the complete directory path to which files will be converted and saved.

4 Media Converter Introduction

4.1 File Convert

Launch "Arcsoft Media Converter" for file format convert



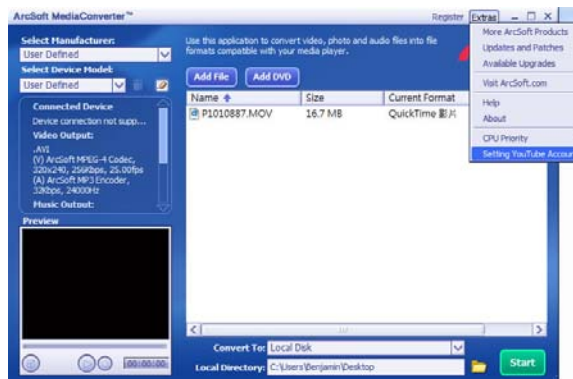
Select "Add File" to add the file you would like to do the format transfer.

You can set up the file format from left hand side

Select the folder you would like to save the file. Click "Start" to complete file convert.

4.2 "You Tube" Setting

Media Converter can direct transfer your file into "You Tube" format and automatically upload to "You Tube" website.



4.2.1 "You Tube" account setting

From "Extra" on the right up side function column, you can choose "Setting You Tube Account" to complete the "You Tube" account



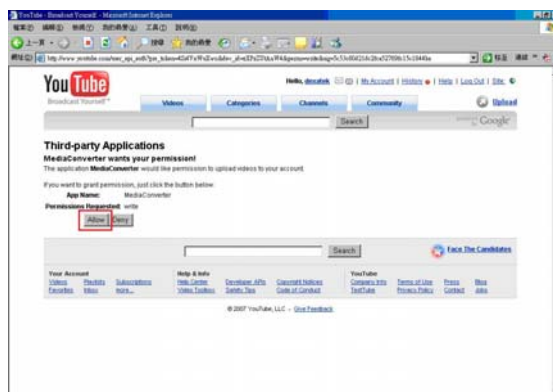
4.2.2 Step 1

Please log in to your "You Tube" account on "You Tube" website.

If you never apply account before, please apply it from there.

Note: please activate your account before you set up your account on Media Converter.

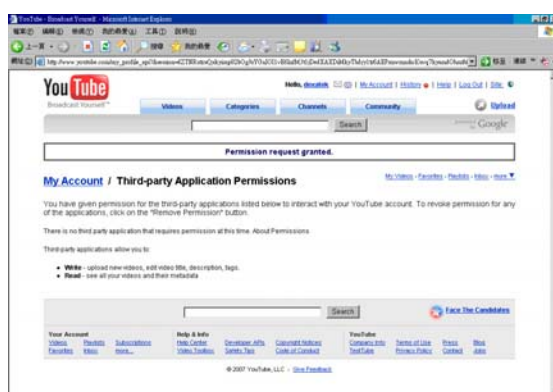
ArcSoft MediaConverter



4.2.2 Get Authorization

After setting your account, please click "Get Authorization".

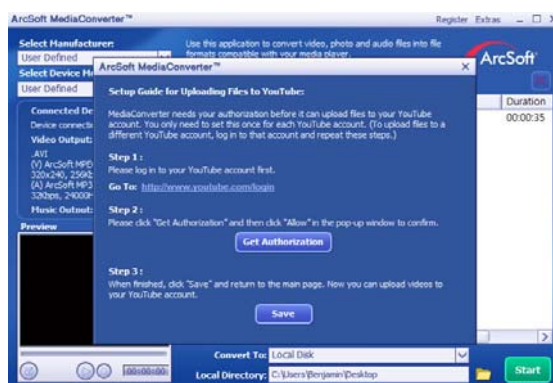
Media Converter will guide you to "You Tube" website. Please press "Allow" to continue the setting.



4.2.3 Permission

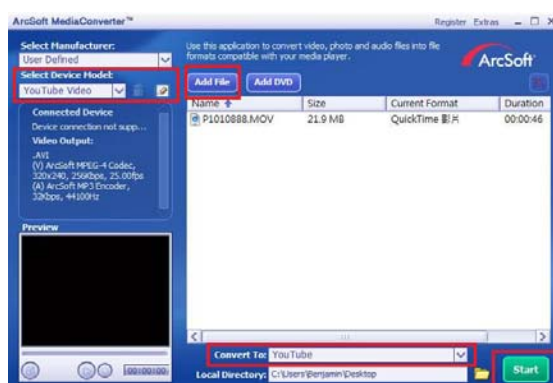
When "Allow" button is clicked, "You Tube" website will show you the permission page.

In this step, you have finished the setting on "You Tube" website.



4.2.4 Save

Please click "Save" on Media Converter to complete the setting.



4.2.5 "You Tube" video uploading

Select "You Tube Videos" on "Select Device Model" on left hand side

Select "You Tube" on "Convert To" on bottom side

Add files you would like to upload

to "You Tube". Press "Start" to start uploading

*For more information, please refer to the PDF manual in the Software CD.