



Documentação do WinKawaks™:

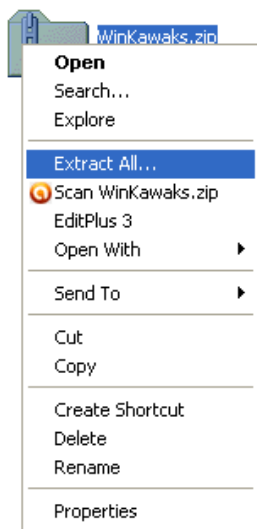
Passo 1. Baixe o WinKawaks

Vá para a página [Downloads](#) e obtenha a versão mais recente do WinKawaks. Depois de baixar, use as ferramentas de soma de verificação SHA1 para ver se o arquivo ZIP foi modificado pelo man in the middle.

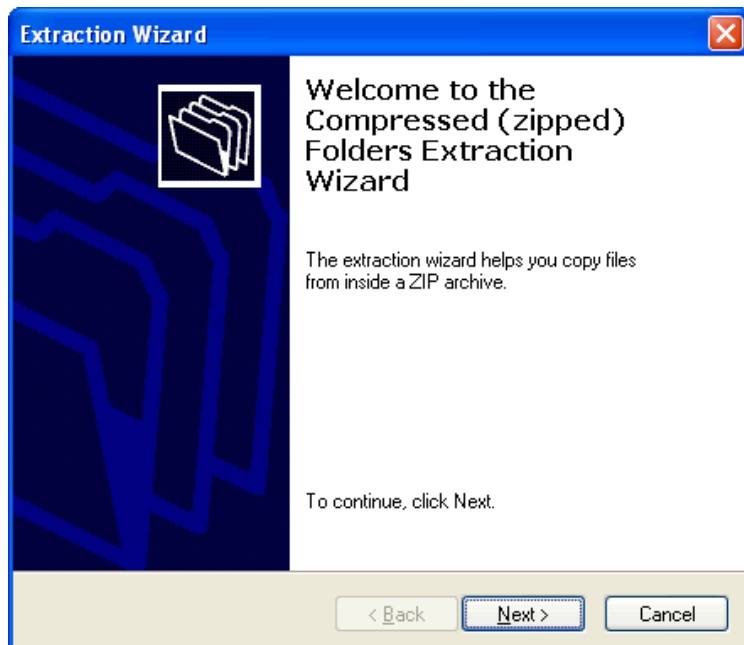
Etapa 2. Descompacte WinKawaks.zip da seguinte forma:

A. se você não tiver nenhuma ferramenta UnZip como WinRAR ou WinZip instalada, use o seguinte passo:

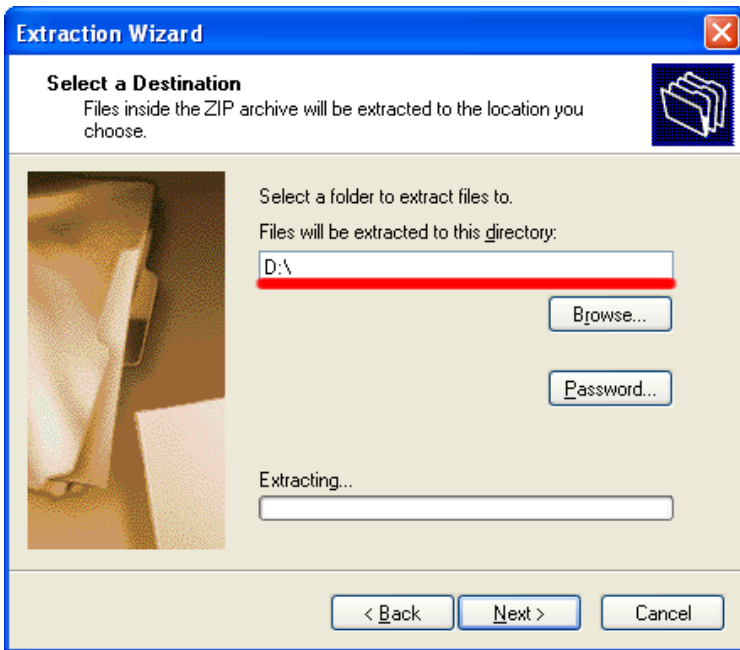
01. Clique com o botão direito em WinKaraks.zip, e você verá isto:



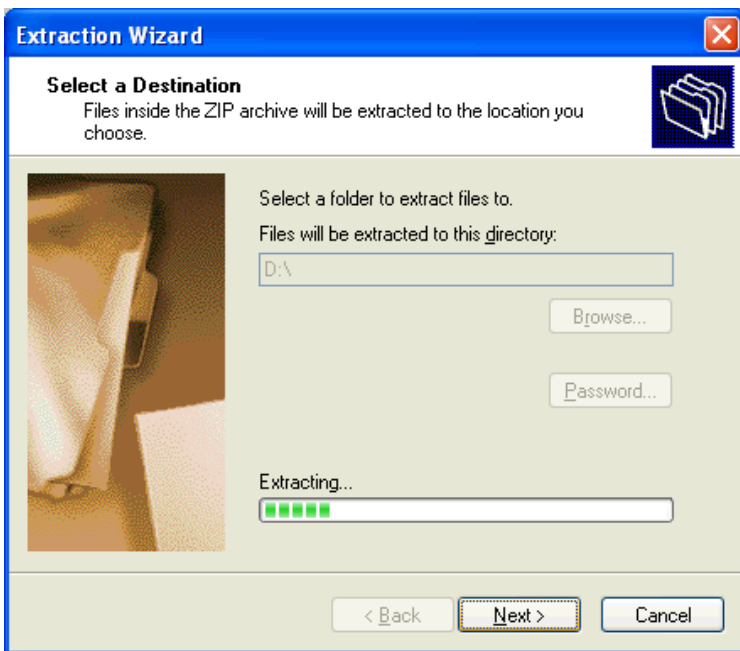
02. Selecione **Extract All** e você verá o Extraction Wizard da seguinte forma:

[Casa](#)[Documentação](#)[Passo a passo](#)[Roms](#) **NEW**

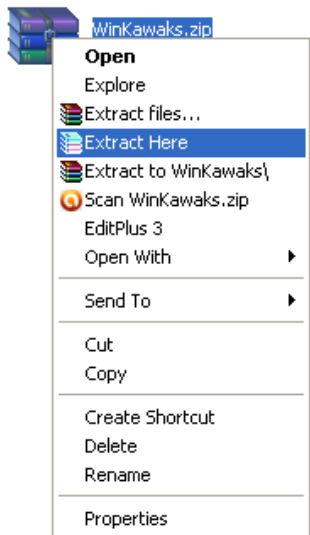
03. Clique em **Avançar** :



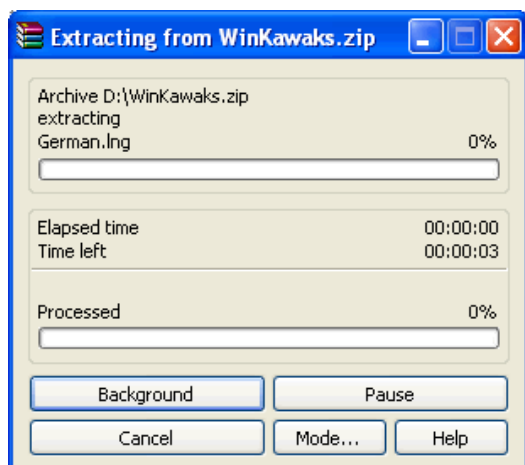
04. Defina a pasta para **D:** e clique em **Next** , e ele irá descompactar:



B. se você tiver o WinZip/WinRAR instalado, verá isto:



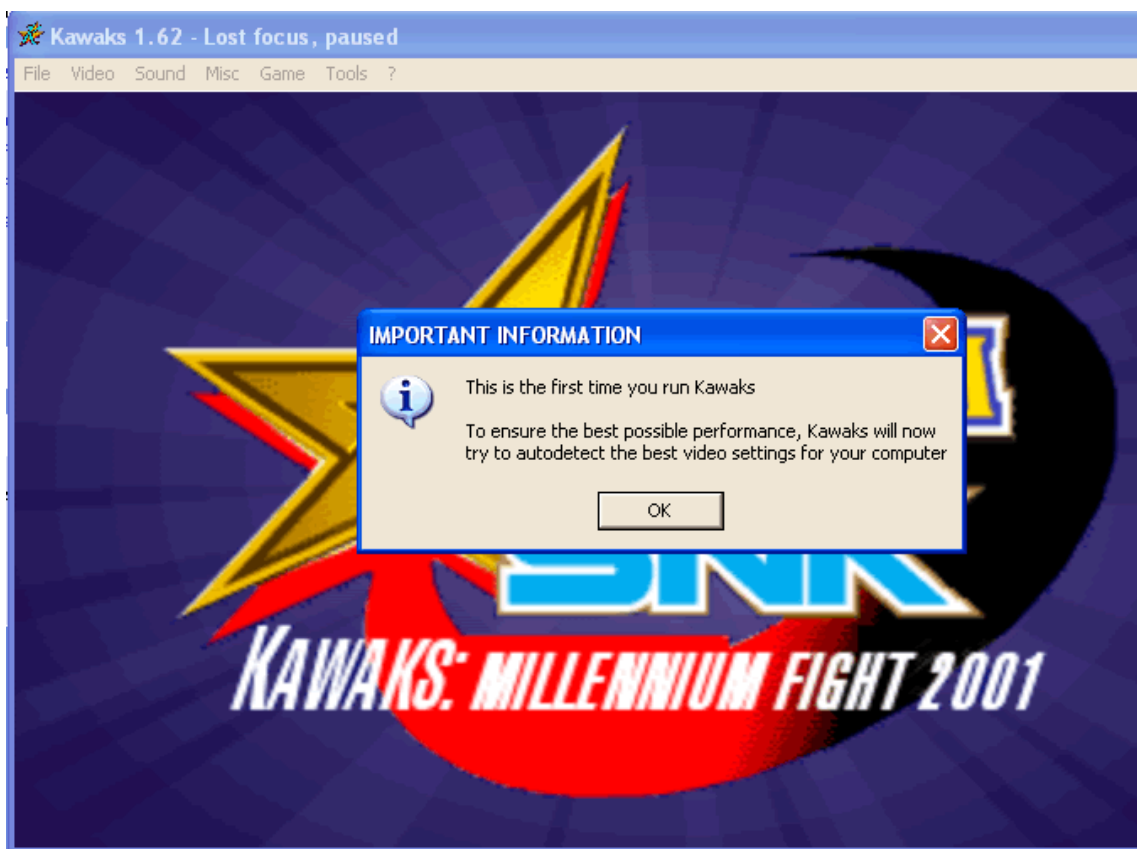
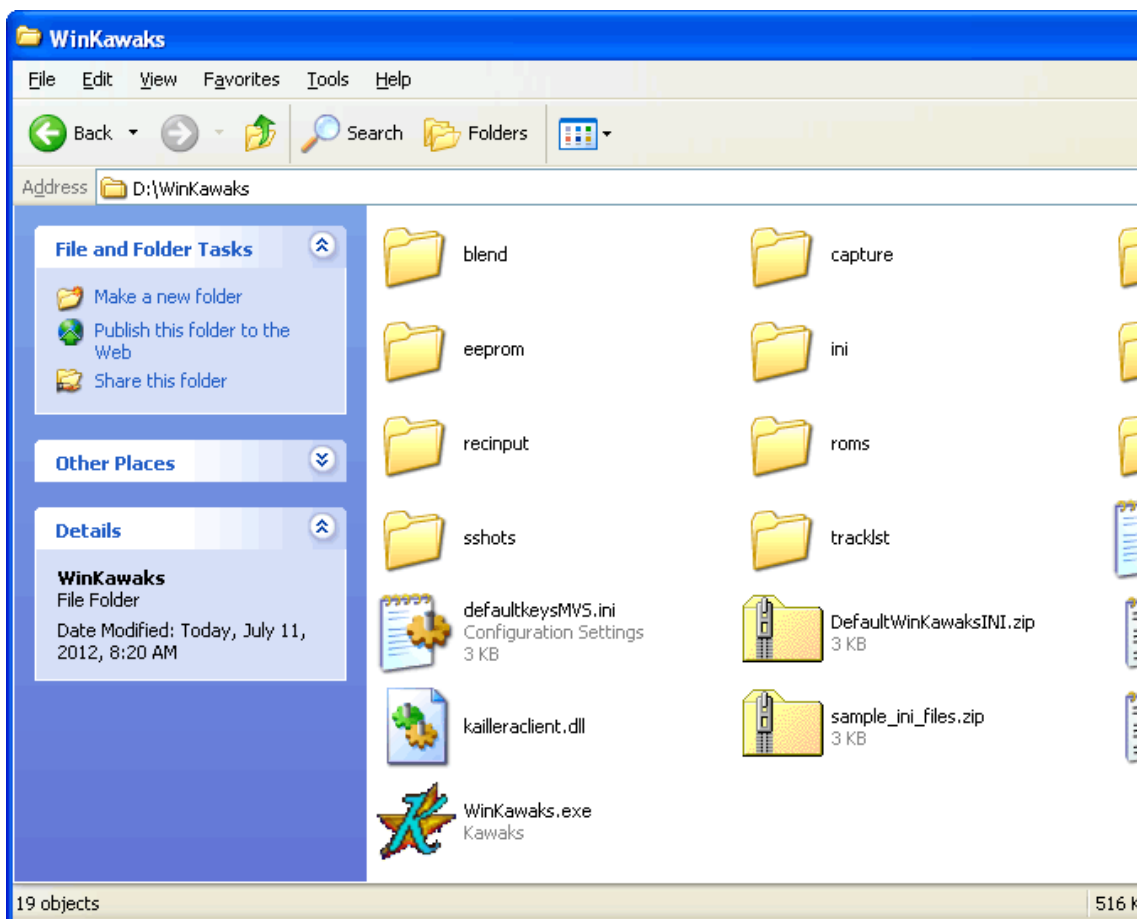
basta colocar WinKawaks.zip em **D:** , clicar com o botão direito do mouse no arquivo zip , selecionar: **Extract Here** , e então o WinRAR/WinZip irá descompactá-lo.



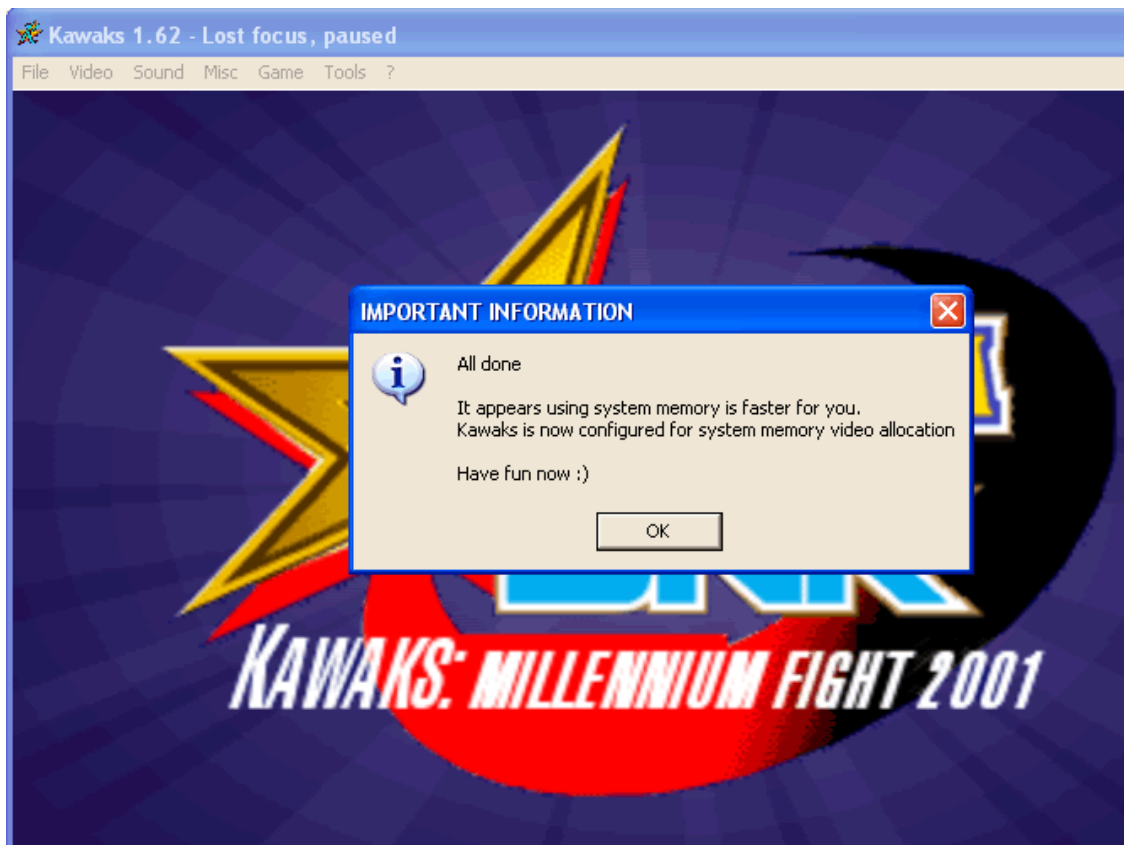
recomendamos que você use D:\

Etapa 3. Execute o WinKawaks.

Agora vá para **D:\WinKawaks** e clique duas vezes em **WinKawaks.exe** :

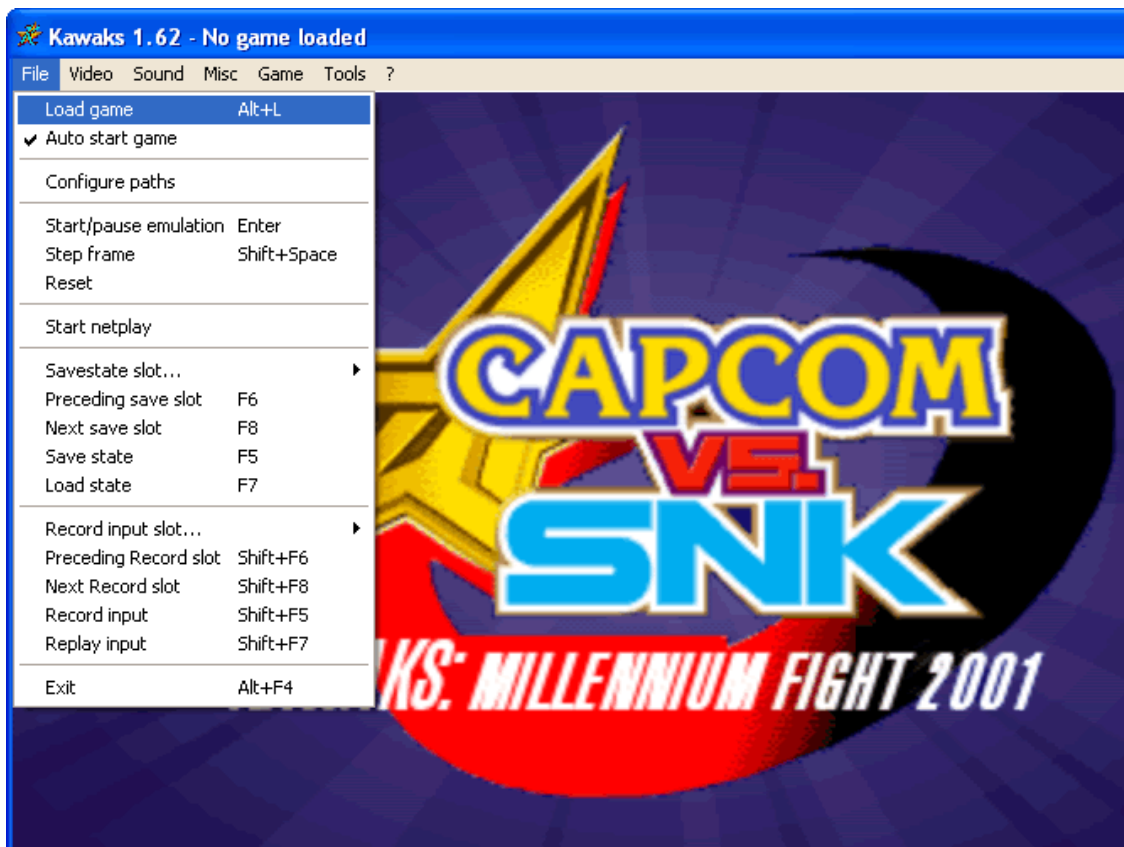


Então você verá a janela principal do WinKawaks:

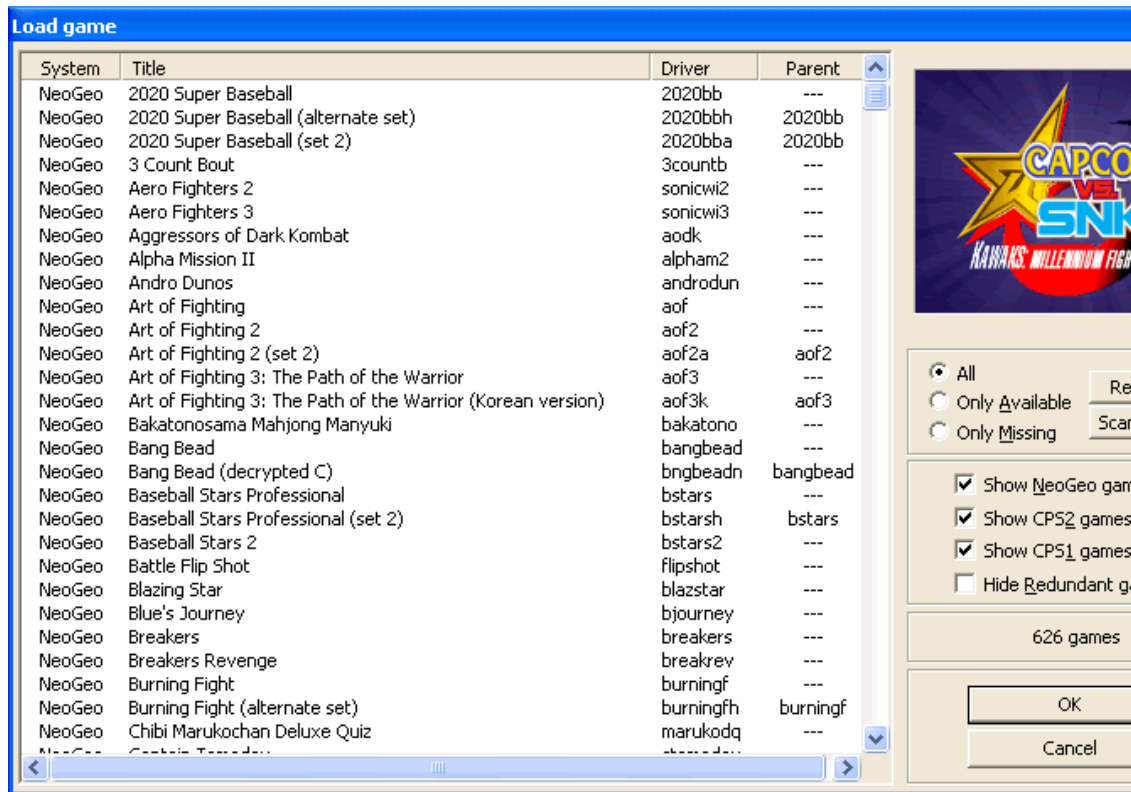


Etapa 4. Carregar Roms:

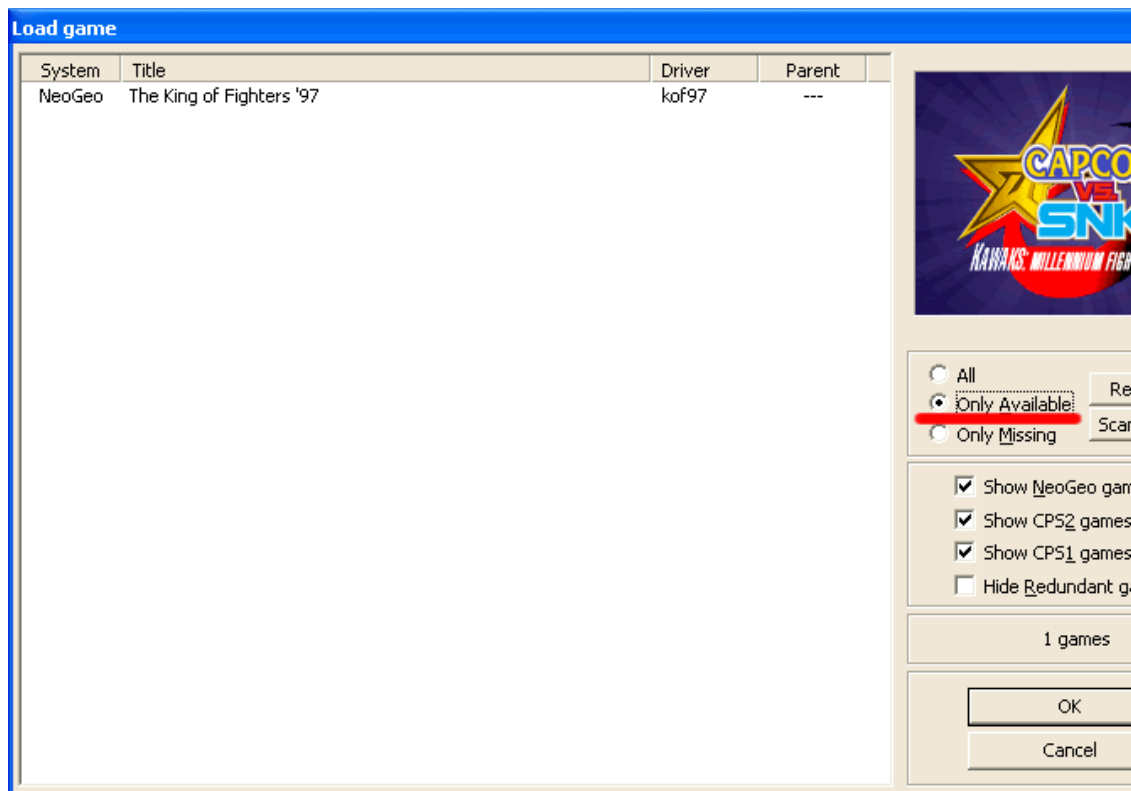
Selecione o menu [Arquivo](#) :



Em seguida, selecione [Carregar jogo](#) , você verá a janela Carregar jogo:



Agora você pode selecionar **Somente disponível** :



and the WinKawaks will scan the following folders for supported roms:

```
roms
roms/neogeo
roms/cps1
roms/cps2
```

so , just put roms into one of the above folders, and WinKawaks will find it.

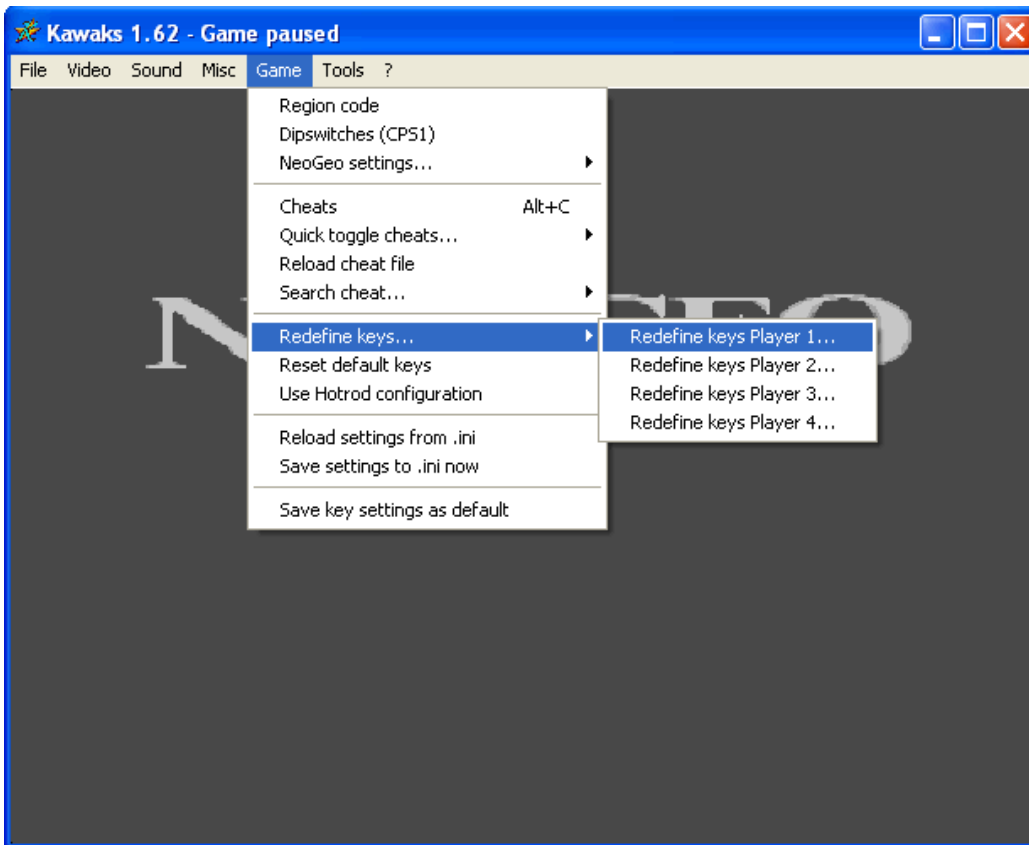
Then click the **Rescan all button**, WinKawaks will rescan all available roms.

Important Notice: DO NOT UNZIP OR RENAME ANY ROM FILE!

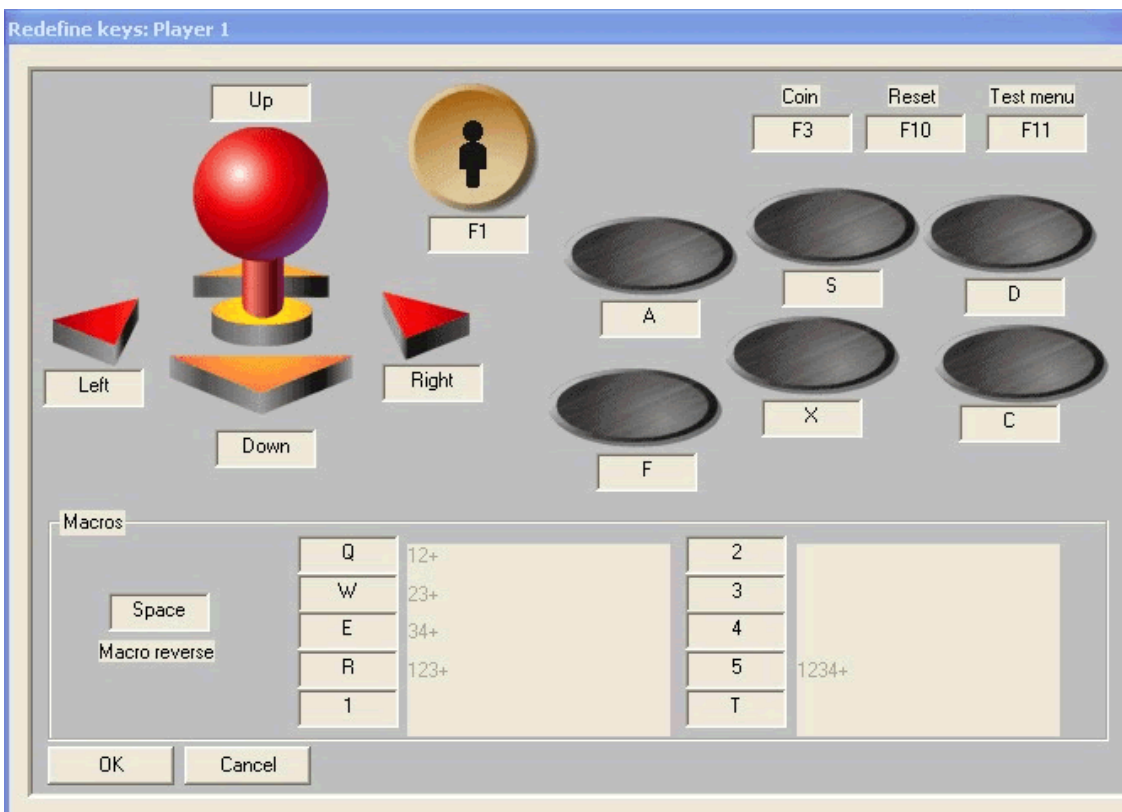
Step 5. Run Games:

when you see the available roms on the Load game window, double click the game on the list and you'll run it. While WinKawaks loaded the rom, you can redefine Keys as follows:

Game -> **Redefine keys** ->



Then you'll see the Redefine Keys windows:

**Step 6. Start NetPlay**

With WinKawaks, you can play games together with your friends.

You should start a Kaillera Server or connected to some exists server

if you do not have a remote Kaillera Server, then go to the [download](#) page to get the latest Kaillera Server and unzip K aillera.zip same as you do to the WinKawaks.zip.

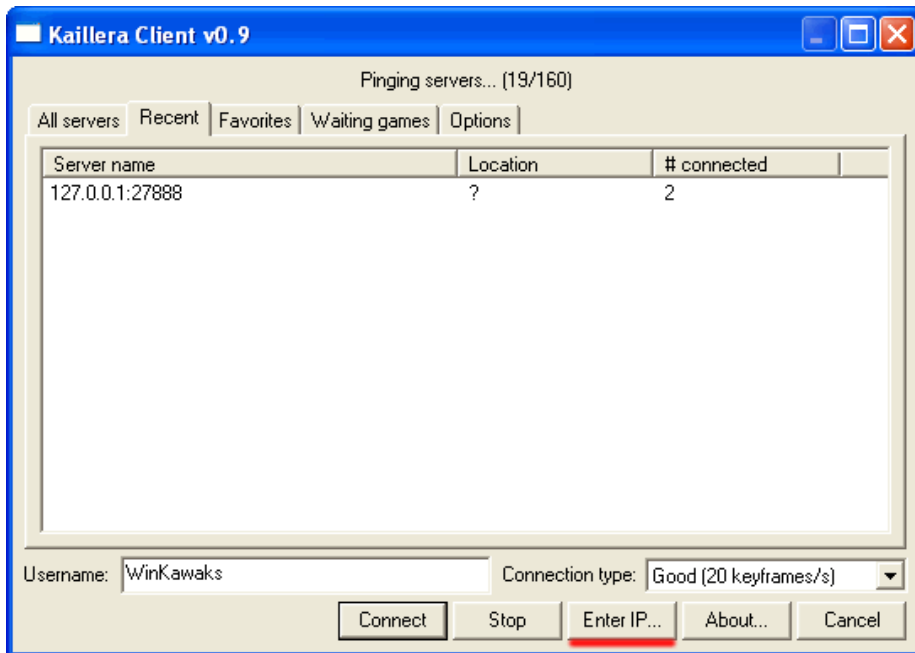
Then run: kaillerasrv.exe, and **Unblock** it if your windows firewall alerts:



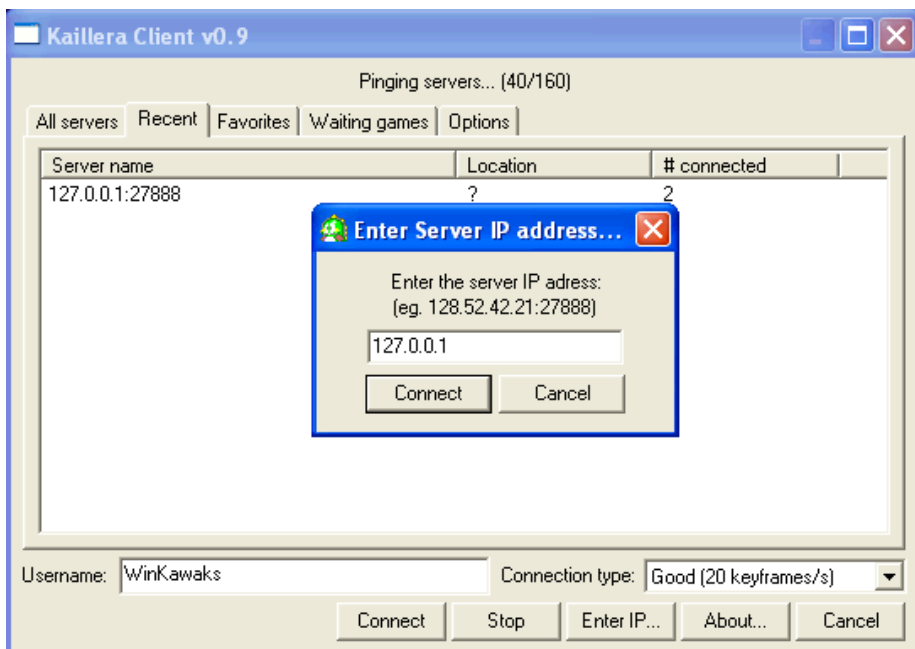
select **Start netplay** on the **File** menu:



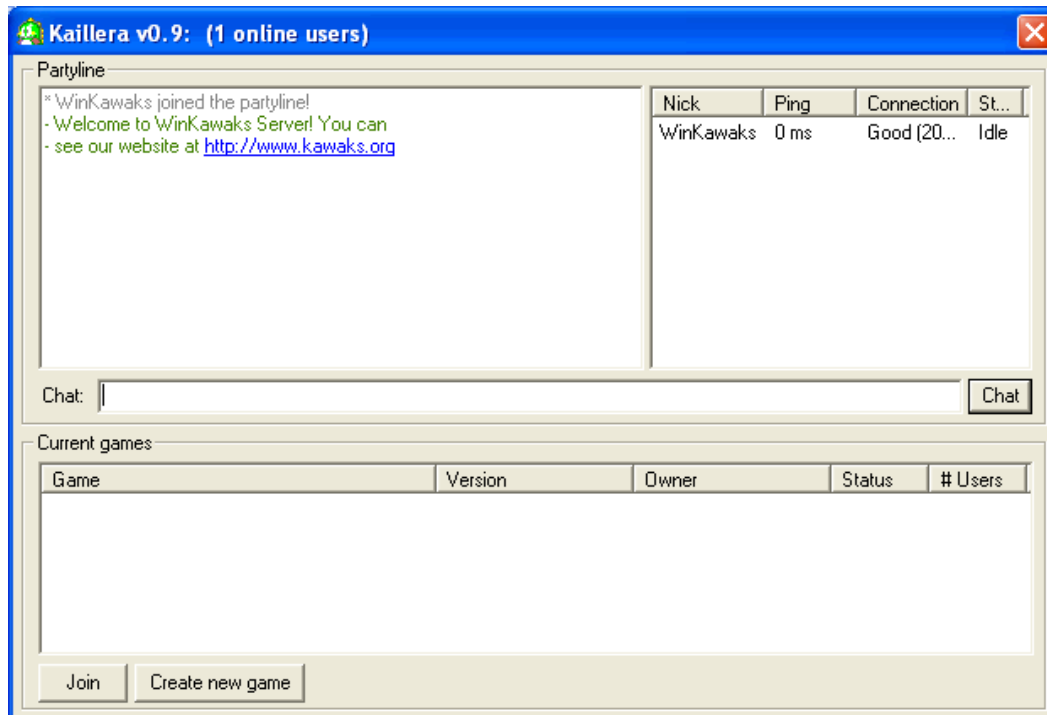
then you'll see the Kaillera Client window:



then click **Enter IP**. button

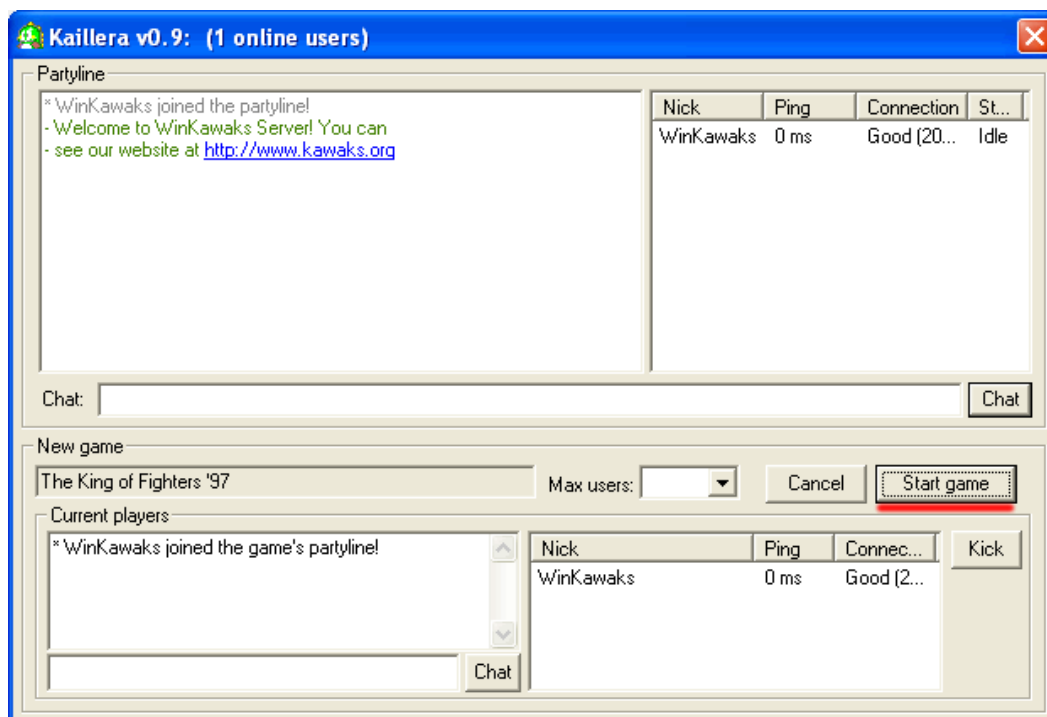


coloque o endereço IP do servidor remoto, clique em **Conectar**



Você pode entrar no jogo já existente clicando no botão **Entrar**

ou criar um novo jogo clicando no botão Criar **novo jogo**



Em seguida, clicando no botão **Iniciar jogo**, você começará a jogar com seus amigos.